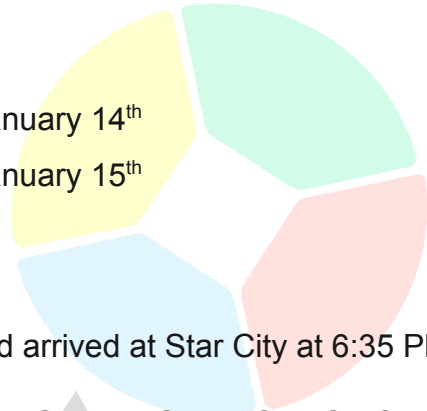


- 1 Bert's birthday is on February 3rd while Elmo's birthday is precisely three weeks before.

When is Elmo's birthday?

- A January 11th
- B January 12th
- C January 13th

- D January 14th
- E January 15th



- 2 The Batmobile left Gotham City at 4:55 PM and arrived at Star City at 6:35 PM.

How long did it take the Batmobile to travel from Gotham City to Star City?

- A 1 hour 35 minutes
- B 1 hour 40 minutes
- C 2 hours 25 minutes
- D 2 hours 35 minutes
- E 2 hours 40 minutes

- 3 The flight time from Greendale to Sunnydale is 1 hour 15 minutes.

If an airplane leaves Greendale at 6:55 AM, what time will it arrive at Sunnydale?

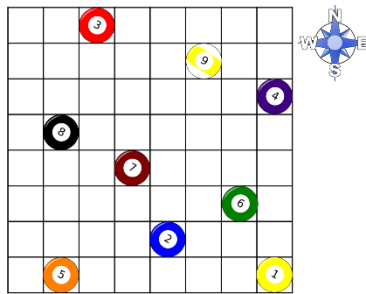
- A 7:10 AM
- B 7:25 AM
- C 7:30 AM
- D 7:55 AM
- E 8:10 AM

- 4 Elsa borrowed a book from the school library on August 5th.

By what date should she return the book if she borrowed it for two weeks?

- A August 16th
- B August 17th
- C August 18th
- D August 19th
- E August 20th

- 5 The grid below shows the location of nine billiard balls on the table.



The number 8 ball is in what direction from the number 2 ball?

- A Northwest
B West
C Southwest
D East
E Northeast
- 6 A boat left Sydney harbour on December 23rd and reached its destination on January 20th.
How many weeks did the boat travel?
A 3 weeks
B 4 weeks
C 5 weeks
D 6 weeks
E 7 weeks
- 7 The new Avengers movie is 1 hour 20 minutes long.
If the movie started at 6:25 PM, what time would the movie end?
A 7:25 PM
B 7:30 PM
C 7:45 PM
D 7:50 PM
E 7:55 PM
- 8 If Waldo started making widgets on May 6th and he can make 25 widgets each day, on what day will he be able to make a total of 225 widgets?
A May 18th
B May 17th
C May 16th
D May 15th
E May 14th

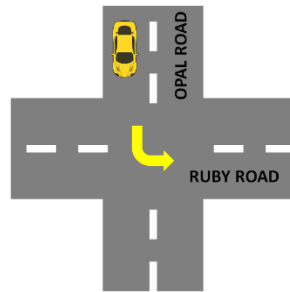
- 9 Bart Simpson began painting his bedroom at 10:00 AM.

He stopped for a lunch break at 12:30 PM and went back to painting an hour later.

How long did he actually spend painting his bedroom if he finished at 2 PM?

- A 3 hours
B 3.25 hours
C 3.5 hours
D 3.75 hours
E 4 hours

- 10 A car was travelling along Opal Road heading in the north direction when it made a turn to Ruby Road, as shown in the figure.



In what direction was the car heading after it made the turn?

- A East
B West
C Southwest
D Northeast
E Southeast
- 11 Jessica Rabbit can type 2 520 words in one hour.

If Jessica Rabbit started typing a 1 680-word document at 12:30 PM, what time did she finish?

- A 1:30 PM
B 1:25 PM
C 1:15 PM
D 1:10 PM
E 1:00 PM

12 Eight months is what fraction of 3 years?

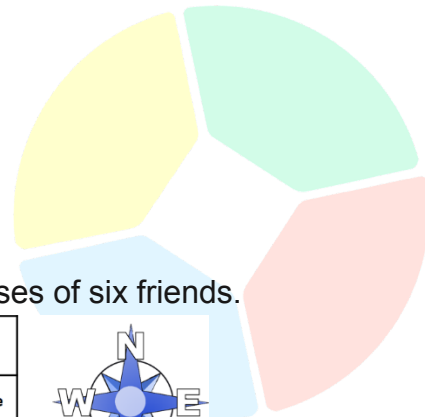
A $\frac{2}{9}$

D $\frac{2}{3}$

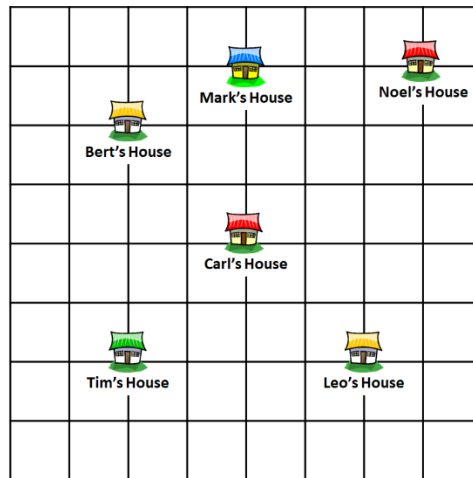
B $\frac{1}{4}$

E $\frac{5}{6}$

C $\frac{1}{3}$



13 The grid below shows the locations of the houses of six friends.



In what direction from Tim's house is Leo's house located?

A North

D East

B Northwest

E West

C South

14 If Nelly was 27 years old in 2022, what year was Nelly born?

A 1994

D 1997

B 1995

E 1998

C 1996

15 Taylor Swift's concert started at 7:30 PM and lasted for 2 hours 15 minutes.

What time did the concert end?

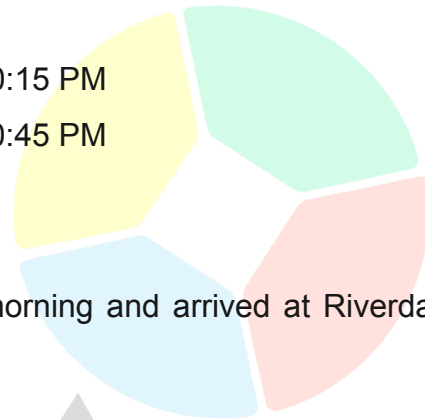
A 8:45 PM

D 10:15 PM

B 9:15 PM

E 10:45 PM

C 9:45 PM



16 A train left Bellwood Station at 5:45 in the morning and arrived at Riverdale at 9:30 that same morning.

How long was the train's trip?

A 3 hours 45 minutes

D 4 hours 45 minutes

B 4 hours 15 minutes

E 4 hours 55 minutes

C 4 hours 30 minutes

17 The figure below shows some of the interesting places in the town of Greendale.



If the school is located in the north direction, what is located in the southeast direction?

A Bank

D Mall

B Bookstore

E Theme park

C Factory

18 If March 1, 2015 falls on a Sunday, on what day of the week does January 1, 2016 fall?

A Tuesday

B Wednesday

C Thursday

D Friday

E Saturday

19 A bus left Star City at 6:45 PM on Monday and travelled for $15\frac{1}{2}$ hours to National City.

On what time and day did the bus arrive at National City?

A 9:15 AM on Tuesday

B 9:45 AM on Tuesday

C 10:15 AM on Tuesday

D 10:45 AM on Tuesday

E 11:15 AM on Tuesday

20 Jesse rented two movies last night and spent 3 hours 30 minutes watching the two movies.

If one movie was 1 hour 40 minutes long, how long was the other movie?

A 1 hour 10 minutes

B 1 hour 50 minutes

C 2 hours 10 minutes

D 2 hours 30 minutes

E 2 hours 50 minutes

21 Ashley left the factory at 5:16 P.M on Thursday and returned at 7:58 A.M on Friday.

How much time elapsed between the time Ashley left the factory on Thursday to the time she returned on Friday?

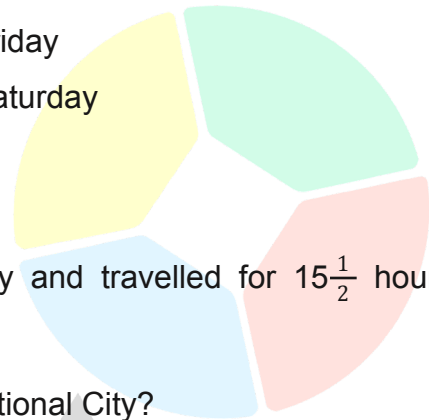
A 15 hours 24 minutes

B 15 hours 16 minutes

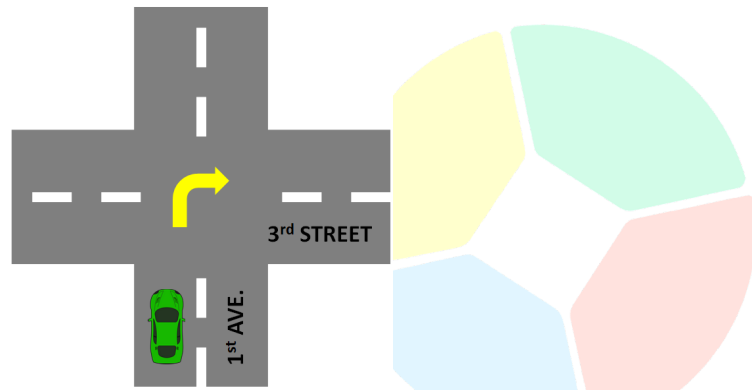
C 15 hours 12 minutes

D 14 hours 56 minutes

E 14 hours 42 minutes



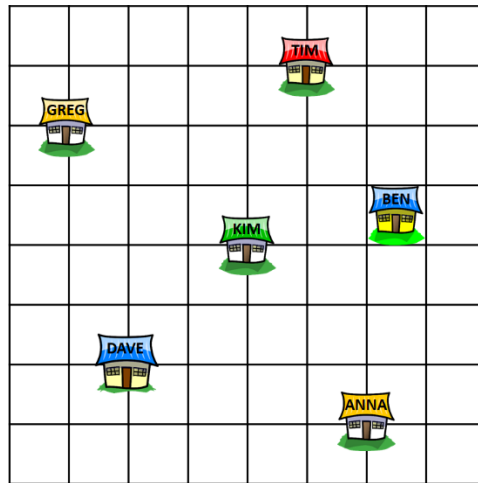
- 22 A car is travelling along 1st Avenue when it makes a turn to 3rd Street, as shown in the figure.



If the car was heading in the northwest direction after it made the turn, in what direction was the car heading before it made the turn?

- A East
B Northwest
C Southwest
D Northeast
E Southeast
- 23 It takes four identical machines 1 hour 45 minutes to complete a particular task.
How long will it take one such machine to do the same task alone?
A 7 hours
B 6 hours 45 minutes
C 6 hours 35 minutes
D 6 hours 30 minutes
E 6 hours 20 minutes
- 24 An airplane left the airport at 1400 hours and reached its destination at 04:10 the next morning.
How long was the flight?
A 8 hours 10 minutes
B 14 hours 10 minutes
C 16 hours 10 minutes
D 18 hours 10 minutes
E 18 hours 40 minutes

25 The grid below shows the locations of the houses of six friends.



If Dave's house is located north of Kim's house, in what direction from Anna's house is Greg's house located?

- A North
- B Northwest
- C South
- D East
- E West

26 Mackenzie arrived at the theatre at 2145 hours for a 2-hour film.

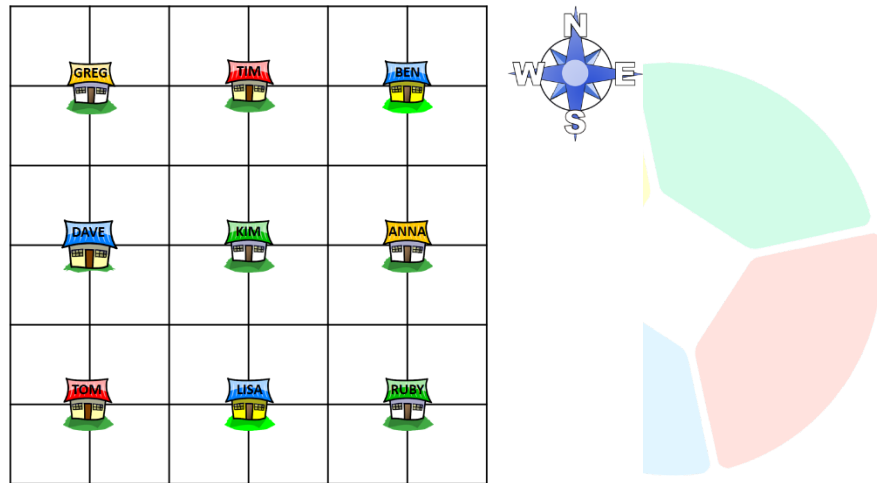
If she arrived at the movie theatre 10 minutes before the movie started, at what time did the movie end?

- A 9:55 PM
- B 10:45 PM
- C 10:55 PM
- D 11:45 PM
- E 11:55 PM

27 If three days ago was Sunday, what day of the week would it be 182 days from today?

- A Monday
- B Tuesday
- C Wednesday
- D Friday
- E Saturday

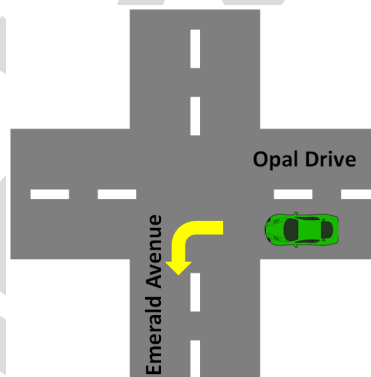
28 The grid below shows the locations of the houses of nine friends.



Whose house is located southeast of Kim's house?

- A Anna
- B Dave
- C Lisa
- D Ruby
- E Tim

29 A car was travelling along Opal Drive when it made a turn to Emerald Avenue, as shown in the figure.



If the car was heading in the southeast direction after it made the turn, in what direction was the car heading before it made the turn?

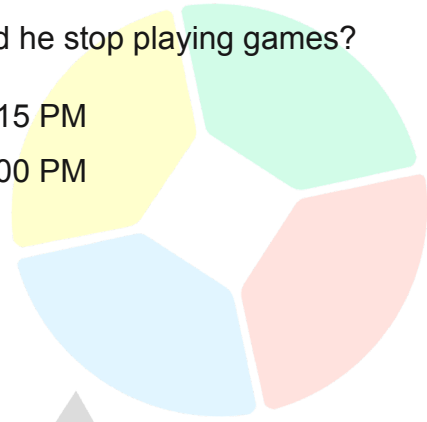
- A East
- B Northwest
- C Southwest
- D Northeast
- E Southeast

- 30 Dexter studied for 1 hour and 30 minutes, after which, he played video games for 45 minutes.

If he started studying at 1:30 PM, what time did he stop playing games?

- A 3:45 PM
- B 3:35 PM
- C 3:25 PM

- D 3:15 PM
- E 3:00 PM



Scholarly

FREE-RESPONSE QUESTIONS

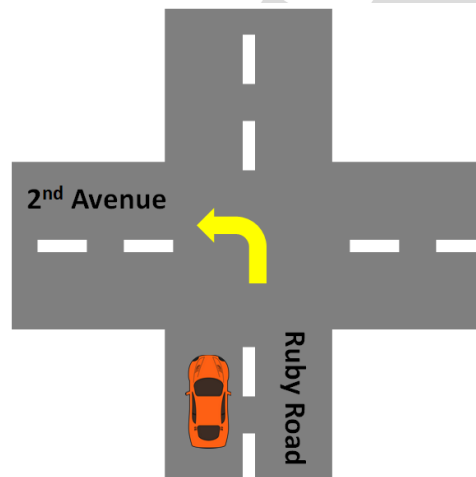
- 31 It took the machine 288 minutes to complete one set of orders.

If the machine started making the order at 10:40 AM, at what time did it finish?

- 32 The Quidditch finals match between Gryffindor and Slytherin lasted for 5 hours 25 minutes.

If the game ended at 1:35 PM, at what time did it start?

- 33 A car was travelling along Ruby Road travelling in the southwest when it made a turn to 2nd Avenue, as shown in the figure.



In what direction was the car headed after it made the turn?

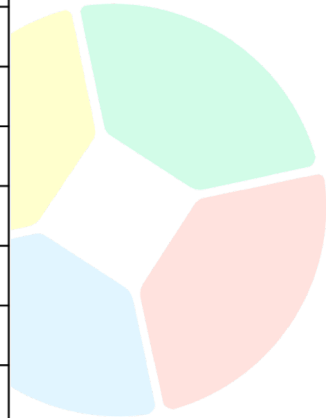
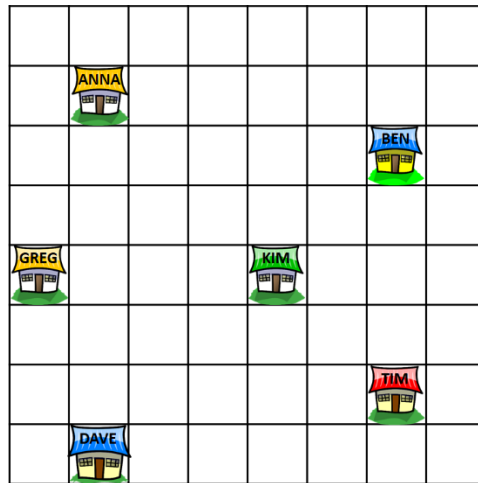
- 34 It will take Jack Ryan 30 minutes to run from his house to the museum and another 35 minutes to run from the museum to the library.

At what time should Jack Ryan leave his house to get to the library at 9:00 AM, passing by the museum along the way?

- 35 Chef Alfredo started grilling the meat at 1:30 PM.

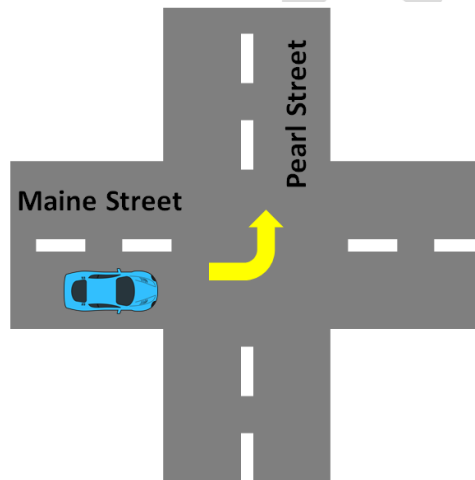
If the instructions say that the meat must be grilled in exactly 25 minutes, at what time should Chef Alfredo stop grilling the meat?

- 36 The grid below shows the locations of the houses of six friends.



If Anna's house is located north of Kim's house and Dave's house is located west of Kim's house, in what direction from Ben's house is Tim's house located?

- 37 A car was travelling along Maine Street when it made a turn to Pearl Street, as shown in the figure.



If the car was heading in the east direction after it made the turn, in what direction was the car coming from before it made the turn?

- 38 Jennifer is baking cakes for the school party.

She has to cool the cake one hour after baking it before she can put it in the box.

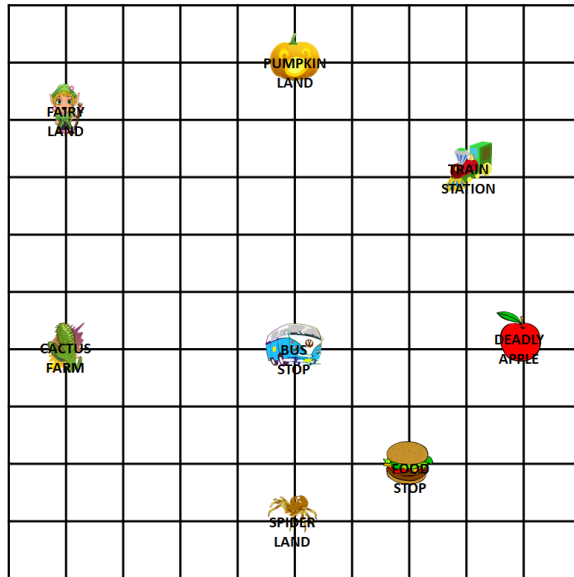
If the cakes finish baking at 2:30 PM, at what can start putting the cake in the box?

39 Paris chatted online with two friends.

She chatted with Martin for $\frac{1}{4}$ of an hour and then chatted with Peter for $\frac{1}{3}$ of an hour.

If Paris started chatting with Martin at 4:25 PM, at what time did she finish chatting with Peter?

40 The grid below shows some of the interesting places in the town of Riverdale.



In what direction from the bus stop is Pumpkin Land located?

School