

NO. QUESTION

1 There were five paintings on a single wall during an art exhibit. The paintings' titles were: *Midnight Rendezvous*, *Wind and Autumn*, *Last Chance*, *Through the Mirror*, and *Cascade*. Each painting depicts only one of these five things and no depiction appears in more than one painting: a river, a city, a field, a room, and a road. Clues are stated in the following conditions:

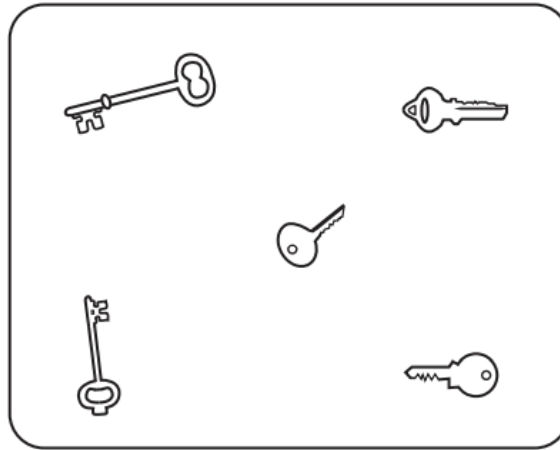
- There are no rooms or roads on the *Midnight Rendezvous* painting.
- *Last Chance* is a painting with a river on it.
- You can find a field on the *Through the Mirror* painting.
- There are no rooms in the *Cascade* painting.

Which of the following statements is true?

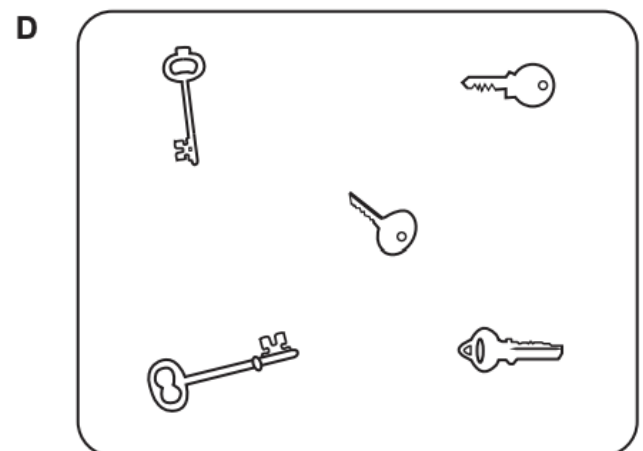
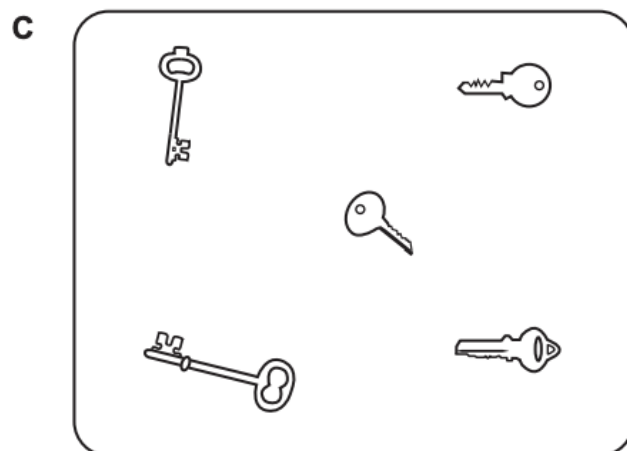
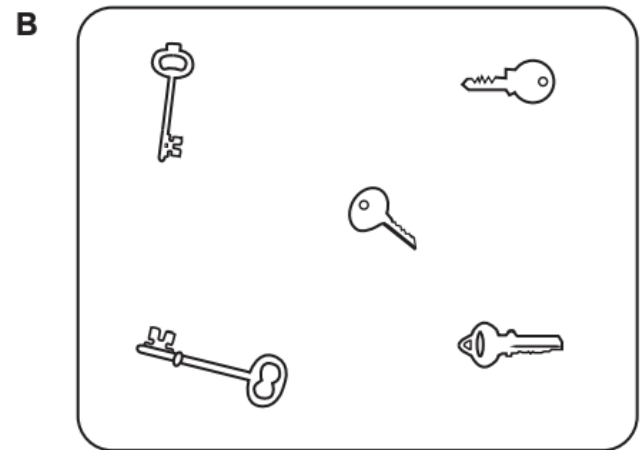
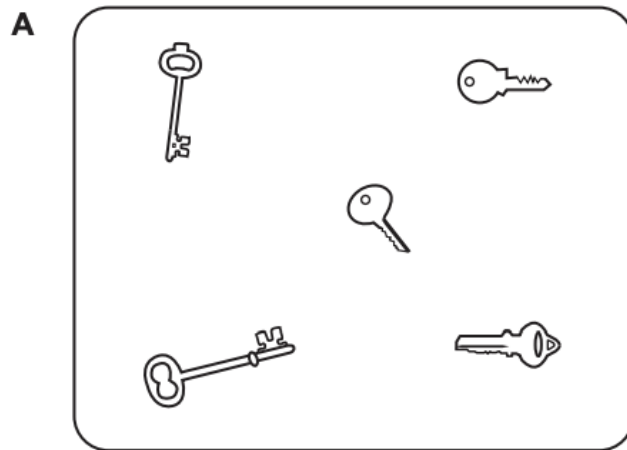
- A. *Cascade* painting depicts a field.
- B. *Wind and Autumn* painting does not depict a room.
- C. *Midnight Rendezvous* painting depicts a river.
- D. *Cascade* painting depicts a road.

2

Five keys are placed on a glass table. The image below shows the view of the table from above.



Which one of the following is a view from under the glass table?



- 3 Liam and Mark communicate by assigning certain words to letters in the alphabet. The following messages show their last four messages in their chat box and their corresponding interpretation.

Messages	Meaning
F A V N C	All dogs will chase mice.
N G C B V	No dogs will chase dinosaurs.
D C T F V	All dogs will climb trees.
X V G C J	No dogs will play piano.

Which letter represents the word “trees”?

- A. T
B. F
C. D
D. Either T or D, but not possible to know
- 4 Arah, Frenkie, Grayson, Lars, Peterson, and Vince— recently participated in the Club shopping event in their school to join different clubs in the campus . Each was required to join at least one club. The following clubs were available—Film Club, Art History Club, and Video Game Club. They joined these elective clubs according to the following conditions:

- Exactly three students join the Art History Club.
- Lars does not join any club in which Vince joins.
- Vince joins the Film Club and Art History Club.
- Arah, Grayson, and exactly two other students join the Video Game Club.
- Peterson and Frenkie share exactly one club.
- Frenkie does not join the Film Club.
- Vince joins more clubs than Peterson.

What is the highest possible number of students who join the Film Club?

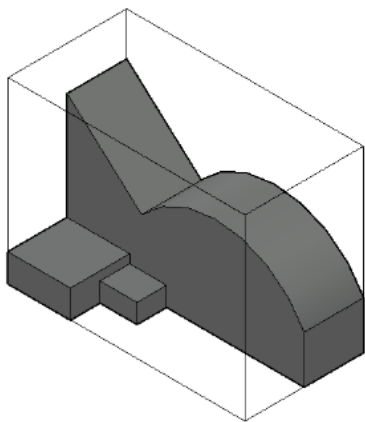
- A. Five
B. Four
C. Three
D. Six

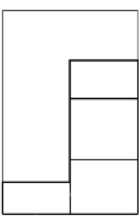
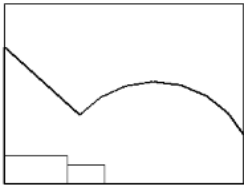
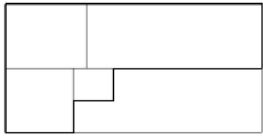
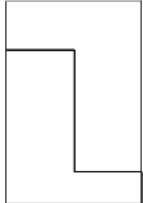
- 5 Marvel Studios has consistently produced some of the highest-grossing films in the history of cinema. The studio's success is due in large part to its ability to create compelling characters and stories that resonate with audiences across the globe. From Iron Man to Captain America to Black Panther, Marvel has brought beloved comic book heroes to life on the big screen in ways that are both faithful to the source material and exciting for new fans.

Which of the following, if true, most strengthens the argument?

- A. Marvel Studios has a larger marketing budget than any other movie studio in the world.
- B. Marvel Studios' films consistently receive positive reviews from critics.
- C. The actors who portray Marvel's iconic characters are among the most talented in Hollywood.
- D. Marvel Studios has licensed its characters for use in video games, merchandise, and theme parks.

- 6 A sculpture is placed in a glass box and displayed in a museum as shown in the diagram below. The sculpture can be viewed from all sides. Which one of the following is **NOT** a possible view from one of the sides of the glass box?



- A. 
- B. 
- C. 
- D. 

- 7 There was a problem in the veterinarian's office. The appointment schedule of three pets was mixed up (name of the pet, the kind of animal, and the time schedule). They were supposed to be scheduled at 10 am, 11 am, and 1 pm, respectively. There were only three clues retrieved to determine the correct schedule of the pet appointments. These are the clues:

1. Chico is not a parrot. His appointment is scheduled for 11 am.
2. A dog who's not named Buddy is scheduled for 1 pm.
3. The dog's name is Pirate.

Which of these statements is true?

- A. Buddy is a parrot and his schedule is 1 pm.
- B. Chico is a cat and his schedule is 11 am.
- C. Pirate is a dog and his schedule is 10 am.
- D. Buddy is a cat and his schedule is 11 am.

- 8 LLC University has been known to produce competent high school graduates who always excel when they enter the university. During their graduation last year, their school principal decided to nominate five students as recipients of the student of the year award. The principal has decided not to reward any student who had more than 2 unexcused absences (absences that do not include those absences with valid reasons).

Player	Number of Total Absences	Number of Absences with Valid reasons	Number of competitions joined	Points from extracurricular activities	Final Academic Grade
Clarkson	2	2	21	14	97
Shirley	3	1	23	15	96
Ronan	4	3	25	17	98
Christian	3	2	24	18	92
Joel	5	2	26	16	94

Since the school does not only promote academic performance, a value was given to the extracurricular points earned by the students. A weighted points system is implemented to balance students' final grades and extracurricular points.

1. Students are ranked according to their Final Academic Grade (with rank 1 being the highest grade). Weighted points are determined by multiplying their rank by 7 (e.g., a student ranked 1 earns a point of $1 \times 7 = 7$ weighted points, a student ranked 2 earns a point of $2 \times 7 = 14$ weighted points).
2. Students are ranked according to their points from extracurricular activities (with rank 1 being the highest grade). Weighted points are determined by multiplying their rank by 3 (e.g., a student ranked 1 earns a point $1 \times 3 = 3$ weighted points, a student ranked 2 earns a point $2 \times 3 = 6$ weighted points).
3. Both weighted points earned from their final academic rank and extracurricular activities rank are added. The student with the least number of points will receive the award.

Which student will receive the student of the year award?

- A. Ronan
- B. Shirley
- C. Clarkson
- D. Christian

9 Many companies are tapping into the growing popularity of gaming by incorporating gaming elements into their marketing strategies. By doing so, they can reach a wider and younger audience while creating an engaging and interactive experience for potential customers. This trend has proven successful for companies in various industries, including retail, food and beverage, and technology.

Which of the following, if true, most strengthens the argument?

- A. Companies should focus on traditional marketing methods, as they have been proven effective for decades.
- B. Gaming is a new area to venture in developing modern marketing strategies.
- C. Companies incorporating gaming elements into their marketing strategies have seen increased engagement and revenue.
- D. Companies should focus on advertising through social media platforms instead of incorporating gaming elements into their marketing strategies.

10

A study published in a medical journal found that eating a diet high in fruits and vegetables is associated with a lower risk of heart disease.



Emman: "Everyone should eat a plant-based diet. It's the only way to prevent heart disease."

Which among the options best describes the flaw in Allan's statement?

- A. Emman is making a claim based on the majority's opinion.
- B. Emman is not considering the environmental impact of the large-scale adoption of plant-based diets.
- C. Emman is assuming that all cases of heart disease can be prevented by eating a plant-based diet.
- D. Emman is ignoring the fact that some people may have dietary restrictions or preferences that prevent them from adopting a plant-based diet.

11 In the code below, (1) each letter always represents the same word, (2) each word is represented by only one letter, and (3) in any given sentence, the position of a word is never the same as that of the word it represents.

P	V	D	E	C
Jason	plays	soccer	and	basketball.
M	X	C	A	H
Harper	watches	golf	and	tennis.
P	A	E	S	C
Charlie	plays	golf	and	soccer.
H	K	C	U	V
Harrison	watches	basketball	and	hockey.

Which letter stands for “hockey”?

- A. H
- B. K
- C. V
- D. Cannot be determined from the information given.

- 12** Jordan has a single fruit bowl. All but nine are oranges, all but nine are apples, all but nine are grapefruit, and all but nine are pears.

How many pieces will Jordan count if he counts the number of apples and oranges only?

- A. 3
- B. 5
- C. 6
- D. 7

- 13** During a City Meet Track and Field competition, Harry, Iris, Jerry, Krister, Levi, Marion, and Nancy competed in the 200-m dash. Their ranks are described according to the following conditions:

- *Harry* is placed second.
- *Jerry* is either placed third or fifth.
- *Nancy* is placed immediately before *Levi* or immediately after Marion.
- *Krister* is placed before *Jerry*.
- At least one runner is placed between *Jerry* and *Krister*.

If *Krister* is placed after *Harry*, then which of the following runners must be placed after *Jerry*?

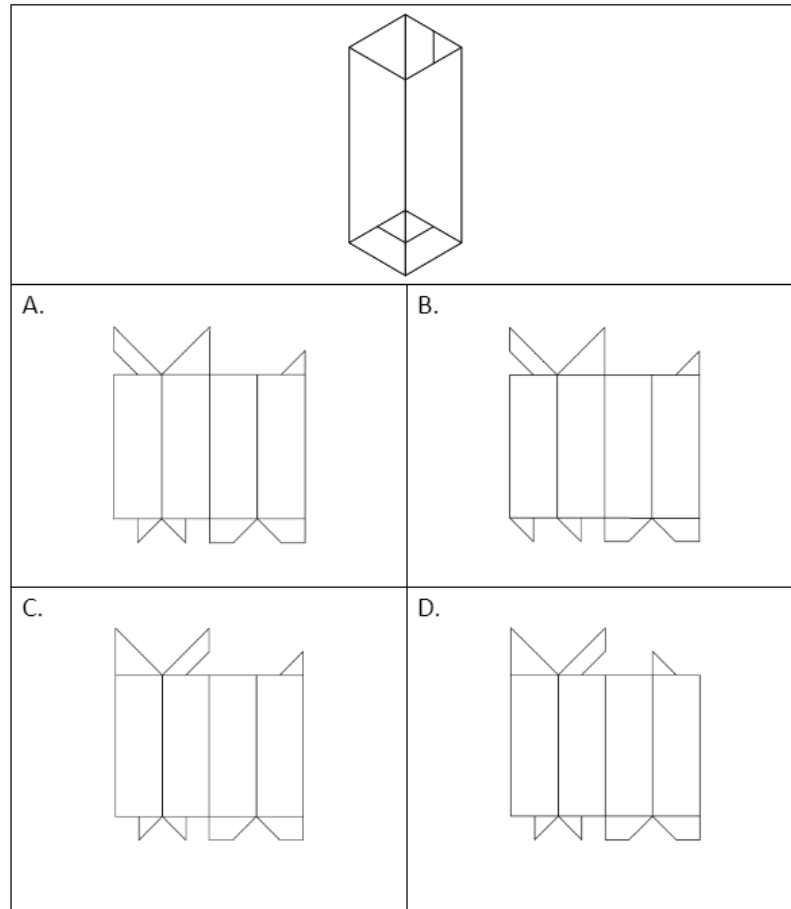
- A. *Iris*
- B. *Nancy*
- C. *Levi*
- D. *Marion*

- 14** Valorant is a much better game than Counterstrike. While Counterstrike has been a staple of the first-person shooter genre for years, Valorant offers better graphics, more diverse gameplay options, and a more active community. In addition, Valorant has a wider range of characters to choose from, each with unique abilities that can significantly alter gameplay.

Which of the following states the main conclusion of the passage?

- A. Counterstrike is an outdated game that cannot compete with newer first-person shooters.
- B. Valorant has a more diverse player base than Counterstrike.
- C. Valorant is a superior game to Counterstrike due to its better graphics, more diverse gameplay options, and wider range of unique characters.
- D. Counterstrike has been surpassed by Valorant as the best first-person shooter game on the market.

15 Which among the answer options, when folded, forms the given object below?



16 Melanie has six tops of different colors: A pink shirt, a Dark blue hoodie, a Red polo shirt, a Yellow Sando, a Green Varsity Jacket, a Purple sleeveless, and a Blue Denim Jacket. She wants to fold or hang each top in the cabinet, but not both. The restrictions below show how she organises her tops inside the cabinet:

- If the red polo shirt is hung, then both Yellow Sando and Purple sleeveless are hung .
- If the green varsity jacket is hung, then the Purple sleeveless is folded.
- If the pink shirt is folded, then Yellow Sando is also folded.
- If the blue denim jacket is folded, then the pink shirt is hung and the dark blue hoodie is folded.
- The purple sleeveless is hung if the pink shirt is hung.

If Purple sleeveless is folded, then each of the following statements must be true EXCEPT?

- A. The pink shirt is folded.
- B. The dark blue hoodie is hung.
- C. The yellow Sando is folded.
- D. The blue denim jacket is hung.

- 17 Pangea was a supercontinent that existed millions of years ago. It consisted of all the modern continents connected together as one large landmass. Scientists believe that Pangea began to break apart about 200 million years ago, eventually forming the continents we know today.

What is the main conclusion of the passage?

- A. Pangea was a supercontinent that existed millions of years ago.
- B. All modern continents were connected together as one large landmass called Pangea.
- C. Pangea began to break apart about 200 million years ago.
- D. The continents we know today were formed when Pangea broke apart.

18

A survey of high school students found that 60% of them report feeling stressed about their schoolwork.



Tom: "These kids need to toughen up. They're going to be eaten alive in the real world if they can't handle high school stress."

Which among the options best describes the flaw in Mark's statement?

- A. Tom is not considering the impact of stress on mental health and well-being.
- B. Tom is making a sweeping generalization about all high school students based on the experiences of a subset.
- C. Tom is ignoring the fact that different individuals may have different stress tolerances and coping mechanisms.
- D. Tom is assuming that high school stress is comparable to the stress that students will face in the real world.

- 19 Bob, Jill, and Andrew are missing! They were all found at different times (8 AM, 10 PM, 12 AM), in different places (church, park, school), and on different days (Monday, Saturday, Sunday). Using the clues, try to figure out what time they were found, where, and what day.

CLUES:

- 1. Andrew was not found in the Church or School, but Bob was found in one location either in the Church or School.
- 2. Jill was not found at 10 PM, just like Bob
- 3. Andrew was not found on Monday or Sunday.
- 4. The person who was found on Monday was at the School.
- 5. Bob was found at 8 am.
- 6. Jill was found at the School.

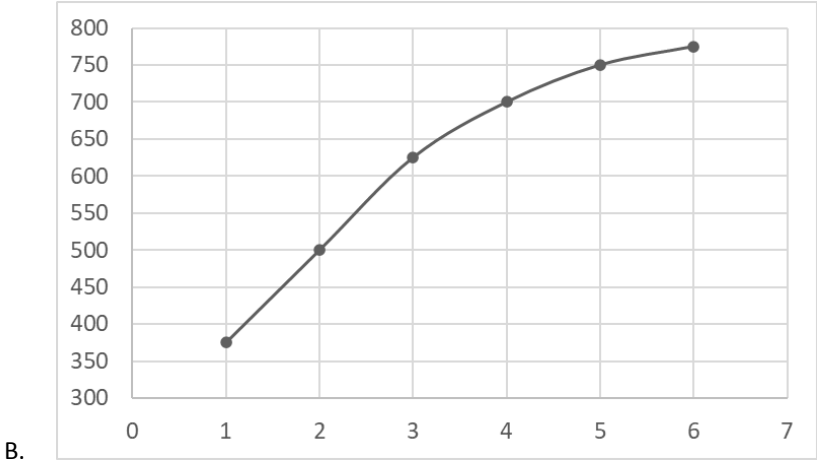
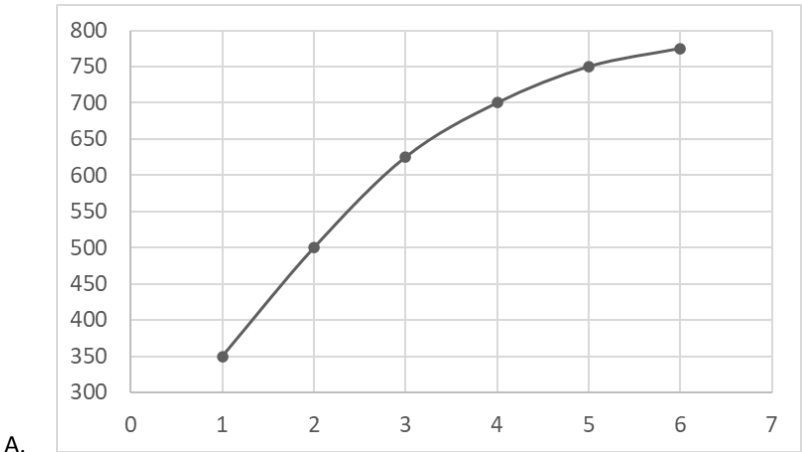
Which of the following statements is true?

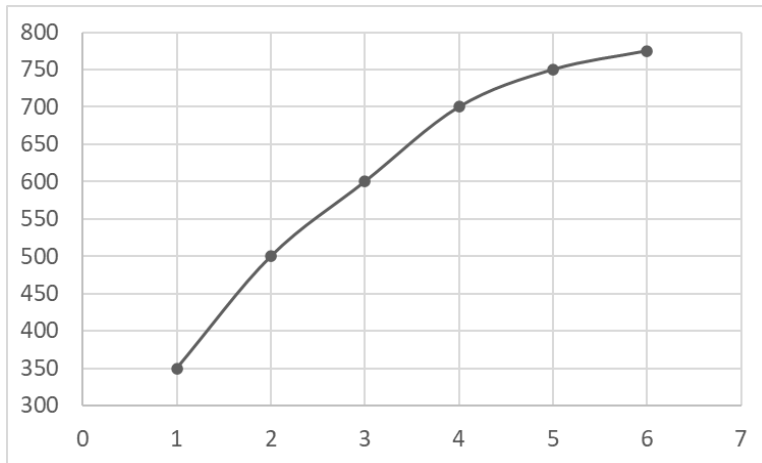
- A. The person found at the park was found at 8 am.
- B. Jill was found on Monday at the park.
- C. Andrew was found at the park at 12 am.
- D. The person found on Monday was found at 12 am.

20 The table below shows the average volume of aerobic bacteria (L) consumed by an aerobic tank to treat a volume of wastewater (L) within 6 months.

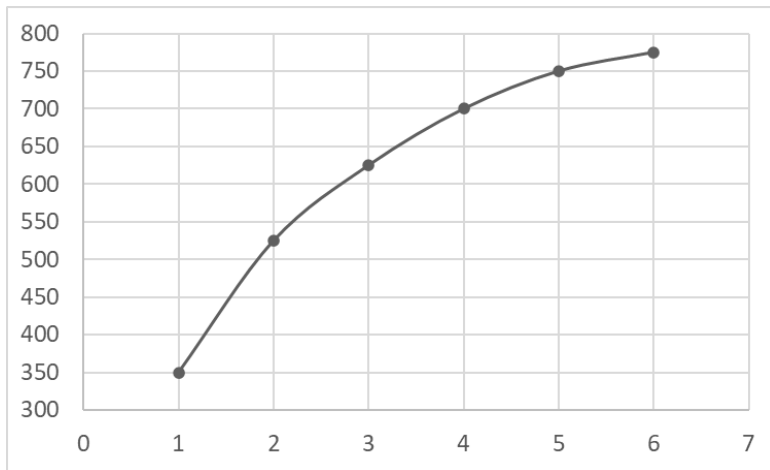
	July	August	September	October	November	December
Aerobic bacteria (L)	2	5	3	6	1	4
Volume of treated wastewater (L)	500	750	625	775	350	700

Which of the following graphs can best illustrate the relationship between the volume of aerobic bacteria consumed and the volume of treated wastewater?





C.



D.

- 21** Jollibee, a Filipino fast-food chain, is the best fast-food restaurant in the world. Its unique flavors, affordable prices, and outstanding customer service make it stand out from other fast-food chains. In fact, Jollibee has expanded globally and has received positive reviews from international customers.

Which statement best weakens the passage?

- A. Many people who have tried Jollibee's food did not like its unique flavors and found them unappetizing.
- B. Several fast-food chains offer cheaper prices and have more extensive menus than Jollibee.
- C. Jollibee has had several health violations in some of its locations, which casts doubt on its ability to maintain quality standards.
- D. Jollibee has faced several lawsuits from employees who claim that the company mistreats and underpays its workers.

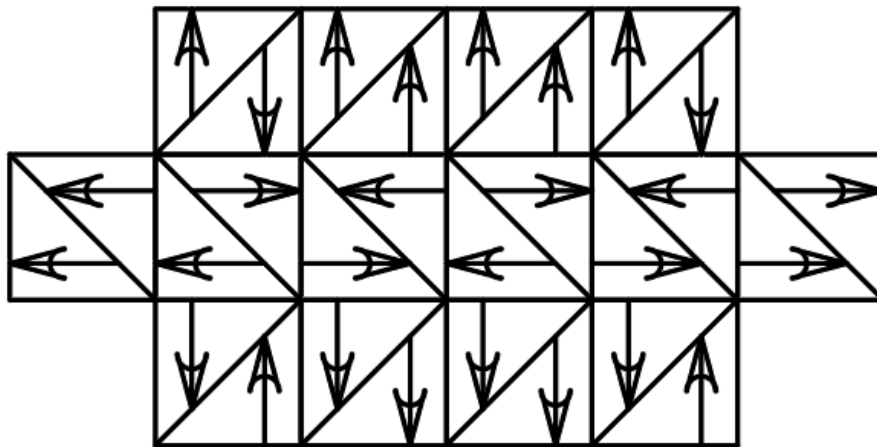
22 Darlene has eight cubic bricks. Each brick has a different letter on each face. The letters on each brick are:

- Brick 1 – STHDIF
- Brick 2 - HEIYJK
- Brick 3 -ONUHS
- Brick 4 -UGIKOM
- Brick 5 –LRMAXN
- Brick 6 – DSLKOP
- Brick 7 - ERMQWS
- Brick 8 - PTYAKW

Which one of the following can Darlene not spell out with her bricks?

- A. SHOULDER
- B. PROGRESS
- C. OPTIMISM
- D. WEAKNESS

23 How many unique square tiles are required to create the pattern below? (Tiles can be rotated)



- A. 2
- B. 3
- C. 4
- D. 5

- 24** Courtney sells a bunch of different items. The table below shows details of the wholesale costs and retail prices for a number of the items sold.

Items	Wholesale cost per pack of 10	Retail selling price per 1 item	Number sold in one week (pieces)
Paper plates	\$320	\$66	180
Paper cups	\$520	\$80	150
Plastic cups	\$160	\$40	200
Glass bottles	\$240	\$100	150
Plastic bottles	\$400	\$200	40

Of the five items sold, which two together made the most profit for the show owner?

- A. Plastic bottles and Plastic cups
 - B. Plastic bottles and Paper cups
 - C. Glass bottles and Plastic bottles
 - D. Glass bottles and Plastic cups
- 25** Greg and Krister communicate by assigning certain words to letters in the alphabet. The following messages show their last four messages in their chat box and their corresponding interpretation.

Messages	Meaning
X G D J	Cindy can talk fast
E W X G	I can talk slowly.
V X J W	I talk with Cindy.
X U J G	Cindy can talk loud.

Greg's recent message to Krister is "X E," which means?

- A. talk slowly
- B. Slowly Cindy
- C. talk loud
- D. Fast talk

- 26 Chemical engineering is a field of study that is becoming obsolete. With advances in technology, there are now software programs that can simulate chemical reactions and predict their outcomes with greater accuracy and speed than humans can. Additionally, many chemical engineering jobs have been outsourced to countries with lower labor costs. This has led to a decline in the number of people pursuing chemical engineering degrees and a reduction in the demand for chemical engineers in the job market.

Which of the following, if true, most weakens the argument?

- A. Many chemical engineering jobs require not only knowledge of chemistry and physics, but also an understanding of business and marketing strategies, which cannot be simulated by software.
- B. While some chemical engineering jobs have been outsourced, there are still many companies that require employees to work on-site to handle the production processes.
- C. Chemical engineering research has led to significant advancements in fields such as biotechnology, materials science, and pharmaceuticals, demonstrating its ongoing importance and relevance.
- D. The simulations provided by software programs are not always reliable, and can lead to costly mistakes if used exclusively in place of human expertise.

27

3	4	6	9
		9	12
8	9		14
9	10	12	

Which is the missing section?

6	8	
	12	
		15

A

6	7	
	11	
		15

B

5	7		
		11	
C			15

5	8		
		12	
			16

D

28 Charisse, Bernat, James, Johanna, Menissa, and Alice are teenagers who plan to travel during their semestral break. However, they were not unified in deciding which place they would visit. Each of them chose only one location between the beach or the hills, but not both. The following rules govern their choices.

- If Charisse chooses the beach, then Johanna also chooses the beach.
- If Alice chooses the hills, then Johanna and Menissa also choose the hills.
- If Menissa chooses the hills, then Bernat also chooses the hills.
- If James chooses the hills, then Menissa chooses the beach.

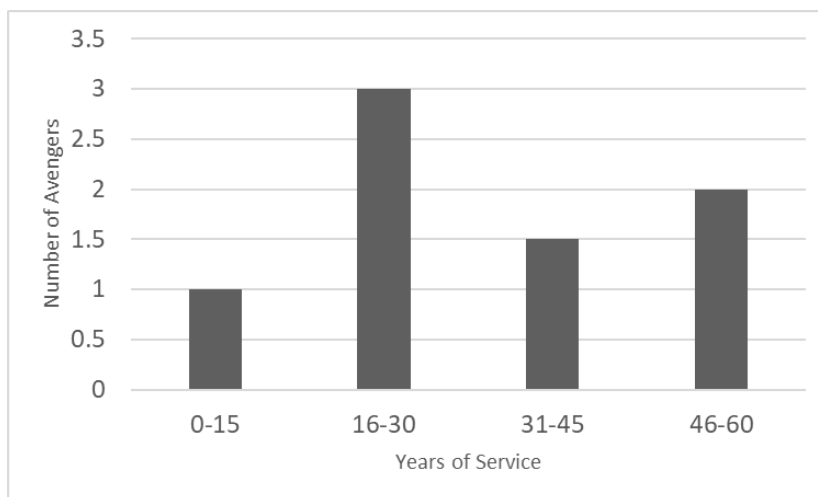
If Alice chooses the hills, what is the minimum number of teenagers that must choose the hills?

- A. One
- B. Three
- C. Four
- D. Five

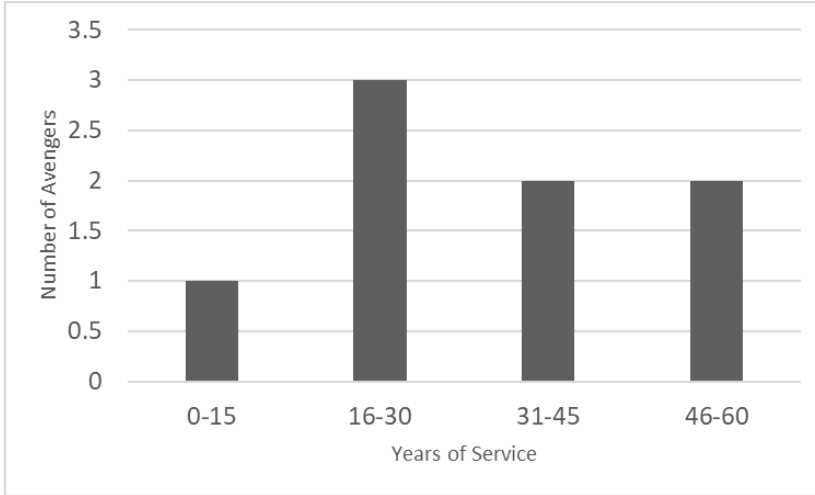
29 Below is a list of the avengers of Earth 161 and their years of service as an avenger.

AVENGER	YEAR OF SERVICE
Odin	1271 - 1306
Kang	1326 - 1376
Captain Marvel	1198 - 1215
Thor	1215 - 1271
Spiderman	1376 - 1398
Loki	1306 - 1326
Ironman	1188 - 1198
Captain America	1153 - 1188

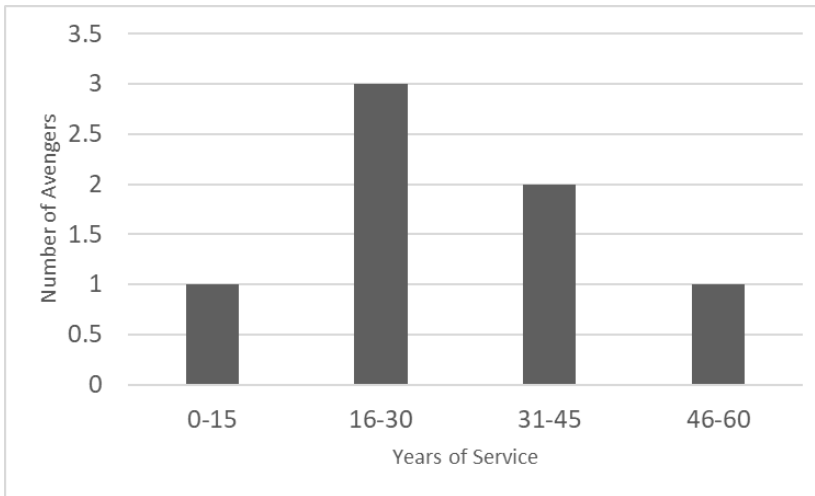
Which of the bar charts best represents the distribution of the number of years of service of these avengers?



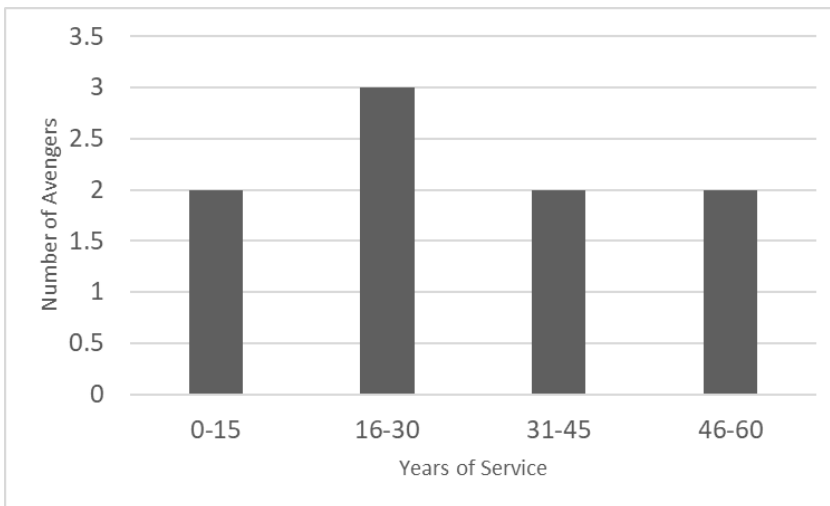
A.



B.



C.

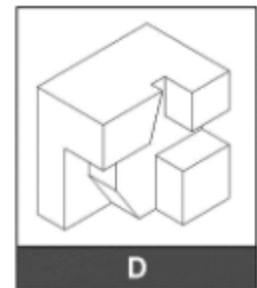
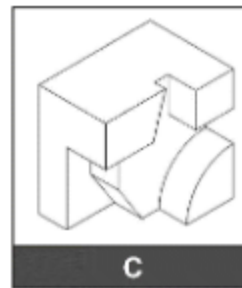
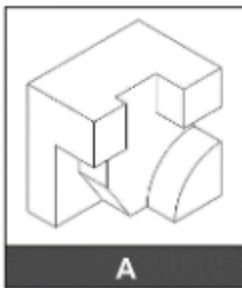


D.

A piece of puzzle is shown below:



Which one of the following pieces will fit the piece above to make a complete cube?



All bulls are beef. Every beef is pork. Some beef is rare.

Conclusions:

- I. Only some bulls are pork.
- II. Every rare is a bull.
- III. No pork is not a bull.
- IV. All bulls are pork.

Which of the conclusions follow the given statement in the box?

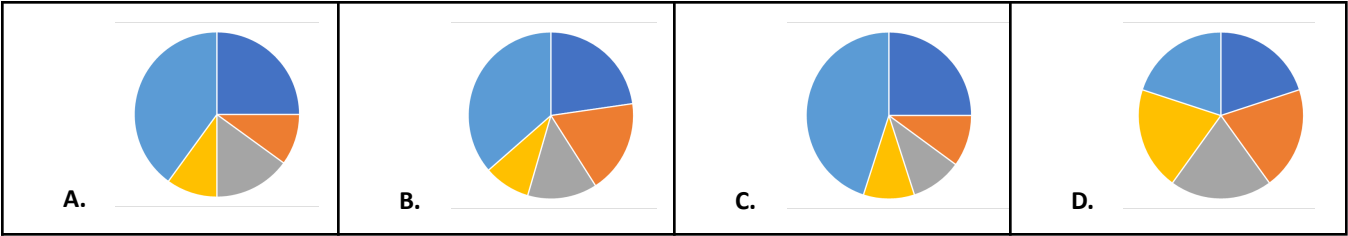
- A. I only
- B. IV only
- C. I and III only
- D. II and IV only

32 Katrina divided her \$10,000 income into five different expenses within a month.

Expenses	Rent	Water Bill	Electricity Bill	Food Dine out	Groceries
Budget	\$2500	\$1000	\$1500	\$1000	\$4000

She made a pie chart representing her budget for each type of expense. However, she forgot to put the labels on her pie chart.

Which one of these four graphs shows the correct representation of her budget allocations for this month?



33 The current approach to addressing the plastic problem is primarily focused on recycling methods. However, this approach has proven to be inefficient and ineffective in reducing the amount of plastic waste. Instead, we should focus on improving the raw materials used in plastic production. By creating new, biodegradable materials, we can significantly reduce the amount of plastic waste in the environment.

Which of the following, if true, most strengthens the argument?

- A. Recycling programs have been successful in some communities and have reduced the amount of plastic waste in those areas.
- B. Companies that produce plastic have little incentive to switch to biodegradable materials as the cost of production is currently higher.
- C. Studies show that plastic waste has a negative impact on the environment and poses a threat to wildlife and ecosystems.
- D. Consumers have become more aware of the negative impact of plastic waste and are actively seeking out products made from biodegradable materials.

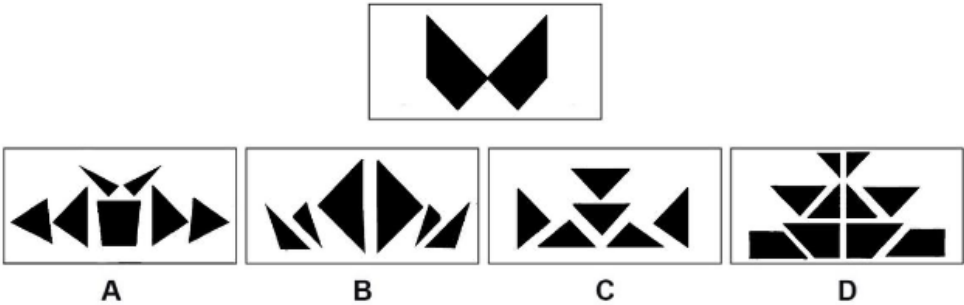
34 Charlie is a barista, and he blends his coffee beans where he uses 3 types of coffee beans - arabica, robusta, and Sagada. He was trying out different blends and got six containers containing different blends of beans (e.g., blends can be 100% of one type of bean or a mixture of two or more). He labeled his containers from A to F. The beans are placed inside the containers according to the following conditions:

- Container B has arabica and robusta placed in it.
- Container D has neither an arabica nor Sagada placed in it.
- Container E has exactly one fewer item placed inside it than in container F, and it does not have Sagada placed in it.
- Container B and container E have exactly two items in common.
- Any container with Sagada placed in it also has robustas placed in it

If a robusta is placed in exactly four containers, then each of the following must be true EXCEPT:

- A. Container B does not have Sagada.
- B. Container C has an arabica.
- C. Container C does not have robusta.
- D. Container A has an arabica.

35 Which component shapes can be made from the component parts?



36 Grayson is looking for a decent laptop supplier. He plans to order in batches of 8 laptops. There are four possible suppliers from where he can possibly order his laptops.

Suppliers	DISCOUNT OFFERS
DigiSale	Buy 1 take 1 for \$200 per piece.
Pentagon	Buy 2 take 1 for \$180 per piece
PCexpress	20% of the final total price at \$300 per piece.
CompLab	Buy 5 at 25% off at a price of \$200 per piece

Where should Grayson buy his laptops if he wants the cheapest cost?

- A. Digisale
- B. Pentagon
- C. PCexpress
- D. CompLab

- 37 At 11:00 am today, my watch showed the correct time. After which, it began to lose 14 minutes per hour until three hours ago when it stopped completely. It is now wrongly showing the time as 2:50 PM.

What is the correct time now?

- A. 4:00 PM
- B. 5:00 PM
- C. 6:00 PM
- D. 7:00 PM

- 38 Global warming is a myth perpetuated by the media and climate scientists. While it is true that there have been some fluctuations in temperature, there is no evidence to support the idea that these changes are the result of human activity. Furthermore, many experts argue that the Earth's climate has always undergone natural cycles, and that humans are not capable of significantly altering the planet's temperature.

Which of the following, if true, most weakens the argument?

- A. Studies have shown that human activity, particularly the burning of fossil fuels, releases greenhouse gases into the atmosphere, which trap heat and contribute to global warming.
- B. The vast majority of climate scientists agree that global warming is a real and pressing issue that needs to be addressed immediately.
- C. There is evidence that some of the fluctuations in temperature are not part of a natural cycle, but rather the result of human activity, such as deforestation and the burning of fossil fuels.
- D. The media has been known to sensationalize stories about global warming, leading to an exaggerated perception of its severity.

- 39 Johnlui, Jared, Jon, Stevenson, and Gabriel each put \$40 into a pot. They measured their height yearly to see how their height increased each year. The one who had increased the most height after 4 years wins \$200. The table shows their progress:

	Johnlui	Jared	Jon	Stevenson	Gabriel
Starting height	172 cm	168 cm	170 cm	174 cm	165 cm
height after year 1	174 cm	168 cm	171 cm	176 cm	165 cm
height after year 2	174 cm	168 cm	171 cm	177 cm	165 cm
height after year 3	176 cm	173 cm	173 cm	177 cm	165 cm
height after year 4	178 cm	175 cm	174 cm	180 cm	175 cm

Who won the \$200 prize pool?

- A. Johnlui
- B. Jared
- C. Jon
- D. Stevenson
- E. Gabriel

40 Given below is a list of numbers in a sequence.

4 8 2 9 6 3 8 1 7 4 2 9 8 7 6

What is the sum of all the odd numbers that are immediately preceded by an even number in the sequence above?

- A. 25
- B. 29
- C. 33
- D. 35