

**NO. QUESTION**

- 1 Scientists are encouraging people to plant and cultivate as many trees as they can. Trees act as carbon sinks, absorbing carbon from the atmosphere and storing it in tree trunks and soil to help delay climate change. Every year, trees absorb one-third of world emissions.

**Which of the following statements, if true, best strengthens the argument?**

- A. Trees clean the air we breathe and help to battle global warming.
- B. Trees require a lot of maintenance to live long.
- C. Trees can be cut to create furniture for our households.
- D. Trees are stress relievers for most people living nearby forests.

- 2 Health professionals claim that face masks will help filter out virus-containing particles from inhaled and exhaled air. When talking, breathing, or coughing, face masks reduce the volume and travel distance of exhaled droplets.

**Which of the following statements best expresses the main conclusion of the argument above?**

- A. Virus-containing particles do not pose a risk to people.
- B. It is ineffective to use masks outdoors.
- C. Wearing face masks lessens the risk of virus infections.
- D. People should not talk about not spreading virus-containing particles.

- 3 It is necessary to study in order to pass a science test. As a result, if a student studies, he or she should be able to pass the science test effortlessly.

**Which one of the following is the best statement of the flaw in the argument above?**

- A. It misrepresents the importance of studying for science exams.
- B. It assumes that studying is required in order to pass science exams.
- C. It overlooks the reality that some kids do not require extensive study time to pass the scientific exam.
- D. It is assumed that studying alone will be enough to pass the exam.

- 4 **Steph:** "James must be physically capable of clearing soccer varsity team tryouts, which are known to be very hard."  
**Luka:** "I doubt. Look, he's not even muscular."

**Which of the following statements best expresses the flaw in the argument above?**

- A. Luka dismisses James' chances of passing the soccer varsity team tryouts because he lacks muscles.
- B. Luka disagreed with Steph by expressing how he does not see James practicing soccer often.
- C. Luka believes that James' muscular frame is strong enough for him to have an advantage in the tryouts.
- D. Luka does not understand James' preparations prior to undergoing the soccer varsity team tryouts.

- 5 Elon purchased 20 candies from the school cafeteria. He ate a dozen of his candies in the afternoon and ate a piece before bringing the rest home.

**How many candies did he bring home?**

- A. 9
- B. 7
- C. 8
- D. 10

- 6 Six swimmers had a competition to see who among them could hold their breath the longest.

Jaime - Zee is in 1st place  
Salazar - Louis came just before Christine  
Bridges - Joseph beat 2 people  
Connie - Bea is in 5th place  
No one came after Michael

**Where did Christine finish?**

- A. 1st
- B. 2nd
- C. 3rd
- D. 4th
- E. 5th
- F. 6th

7

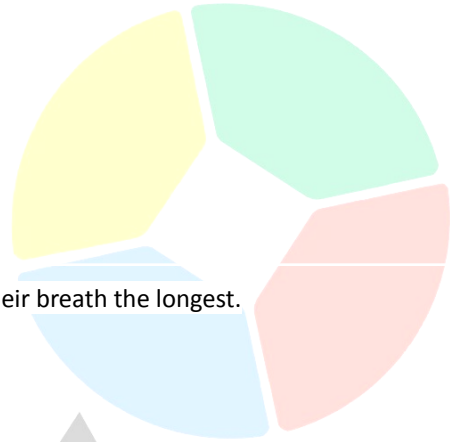
Mina and Sana are both singers in their glee club at school. All singers had a singing workshop last summer. Most singers in the glee club can play the piano.

**If the information in the box is true, whose reasoning is correct?**

**Zoe:** "If a singer had undergone a singing workshop last summer, then they must know how to play the piano."

**Kim:** "Both Mina and Sana can play the piano"

- A. Kim only
- B. Zoe only
- C. Both Kim and Zoe
- D. Neither Kim nor Zoe

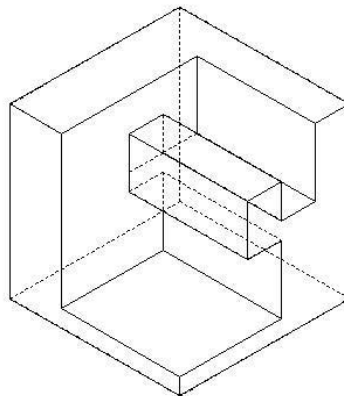


- 8 Mr. Parker wishes to purchase 8 pieces of diamonds. The boxes he needs are available in four locations. The table below lists the shop, prices, and any special deals.

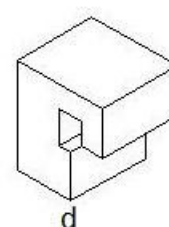
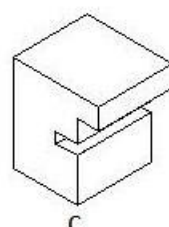
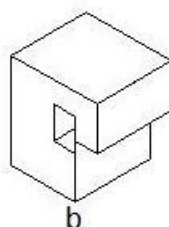
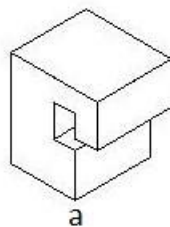
Store	Price per Piece	Discounts and Offers
Avengers Inc.	\$1720	40% off discount on total price
Baxter Foundation	\$2100	Buy One Get One Free
Inhumans Co.	\$1905	20% discount on total price
Stark Industries	\$1050	No Special Offer

Mr. Parker wants to buy all of his diamonds in one place for the lowest feasible price. Where should he go to get his diamonds?

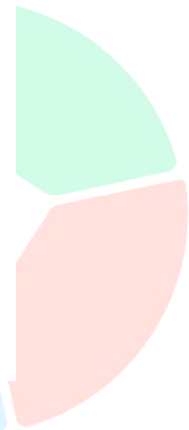
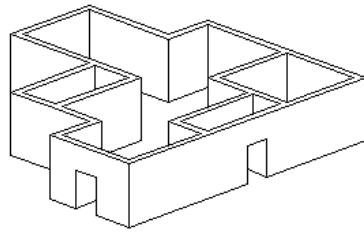
- A. Inhumans Co.
  - B. Stark Industries
  - C. Avengers Inc.
  - D. Baxter Foundation
- 9 A piece of a puzzle is shown below.



Which one of the following pieces will fit with the piece above to make a complete cube?

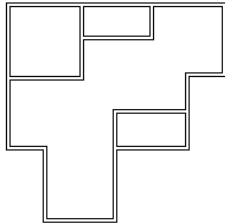


A view of a single level of a building is shown below:

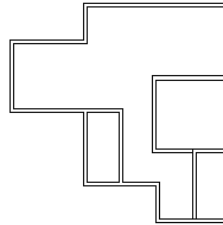


Which among the following drawings represents the floor plan for this level of the building?

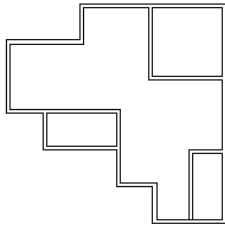
A



B



C



D

