

Scholarly Test Prep

EXTENDED METAPHORS

YEAR 5





“

**You can't focus on
what's going wrong.
There's always a way to
turn things around, to
find the fun.**

- Joy



LET'S RECALL!

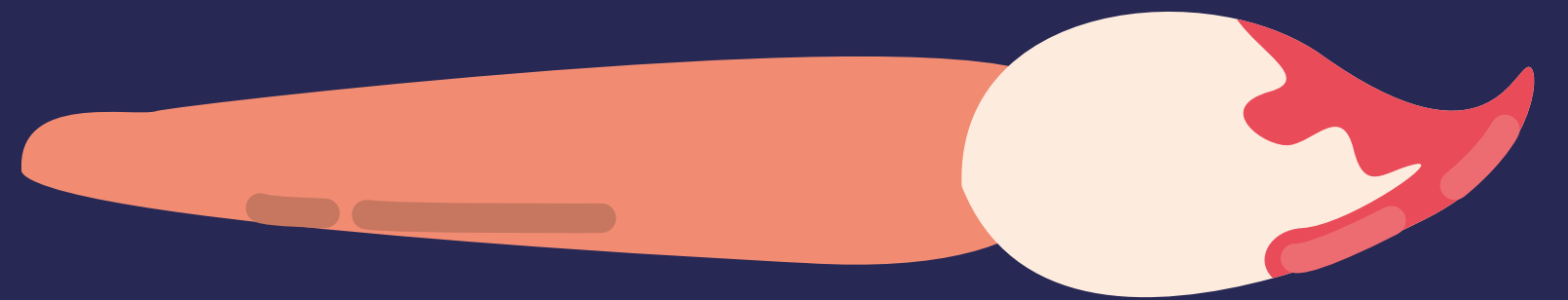
Can you give an example of a metaphor in a sentence? Write your answers down!

Wait...
I must remember.





THE ART OF EXTENDED METAPHORS



WHAT IS AN EXTENDED METAPHOR?

Takes one metaphor and elaborates on it. Building on one idea in many ways that continues throughout a series of sentences in a paragraph or lines.

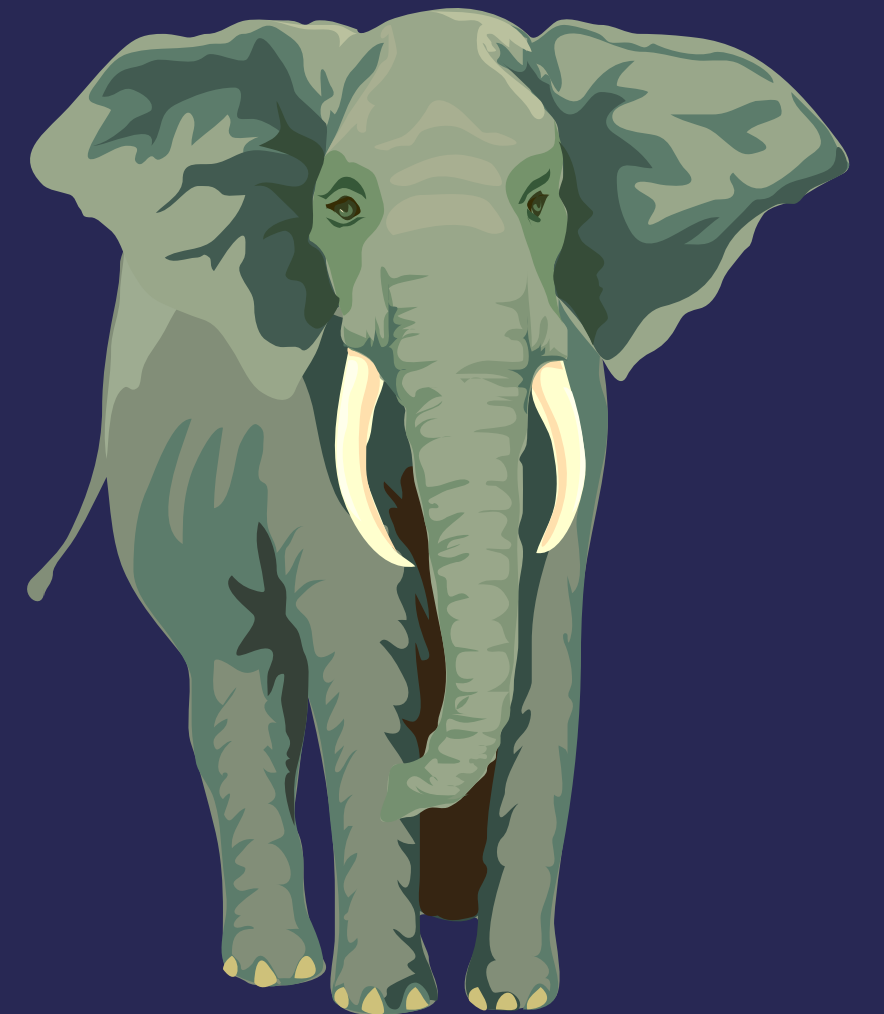


For example

The cafeteria is a jungle.
Wild animals scrambling for food.



Grunting
Like wild boars
Stampeding
To the line
Devouring
Their prey
Cleaning
Their paws



And then returning to their dens.

What have you noticed?

The focused metaphor is "The cafeteria is a jungle." The author then elaborates on the metaphor by making comparisons.

LET'S HAVE AN ACTIVITY

**On the next page, read the famous poem by
Langston Hughes entitled "Mother to Son."**

**Pay attention of the way it is written
because the following activities will be
linked to it.**



Mother to Son

by Langston Hughes



Well, son, I'll tell you:

Life for me ain't been no crystal stair.

It's had tacks in it,

And splinters,

And boards torn up,

And places with no carpet on the floor—

Bare.

But all the time

I've been a-climbin' on,

And reachin' landin's,

And turnin' corners,

And sometimes goin' in the dark

Where there ain't been no light.

So boy, don't you turn back.

Don't you set down on the steps

'Cause you finds it's kinder hard.

Don't you fall now—

For I've still goin', honey,

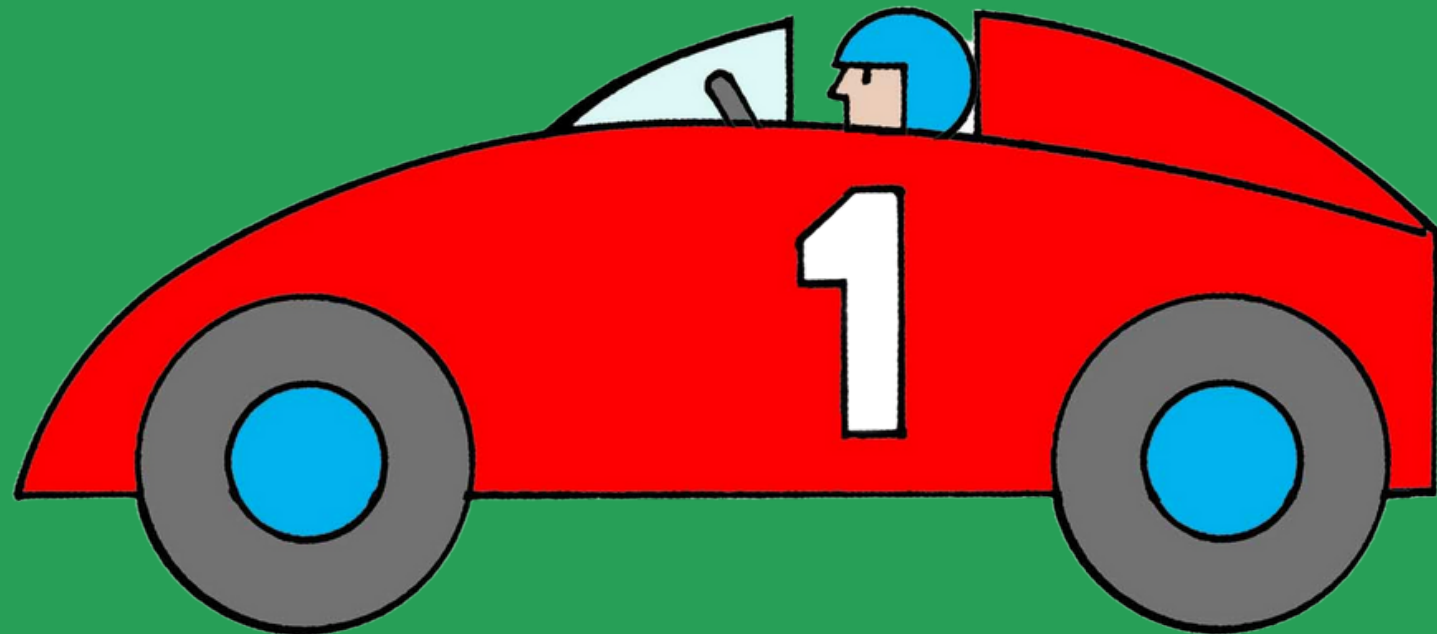
I've still climbin',

And life for me ain't been no crystal stair.

STRUCTURE OF A METAPHOR

1

TENOR



2

VEHICLE

1

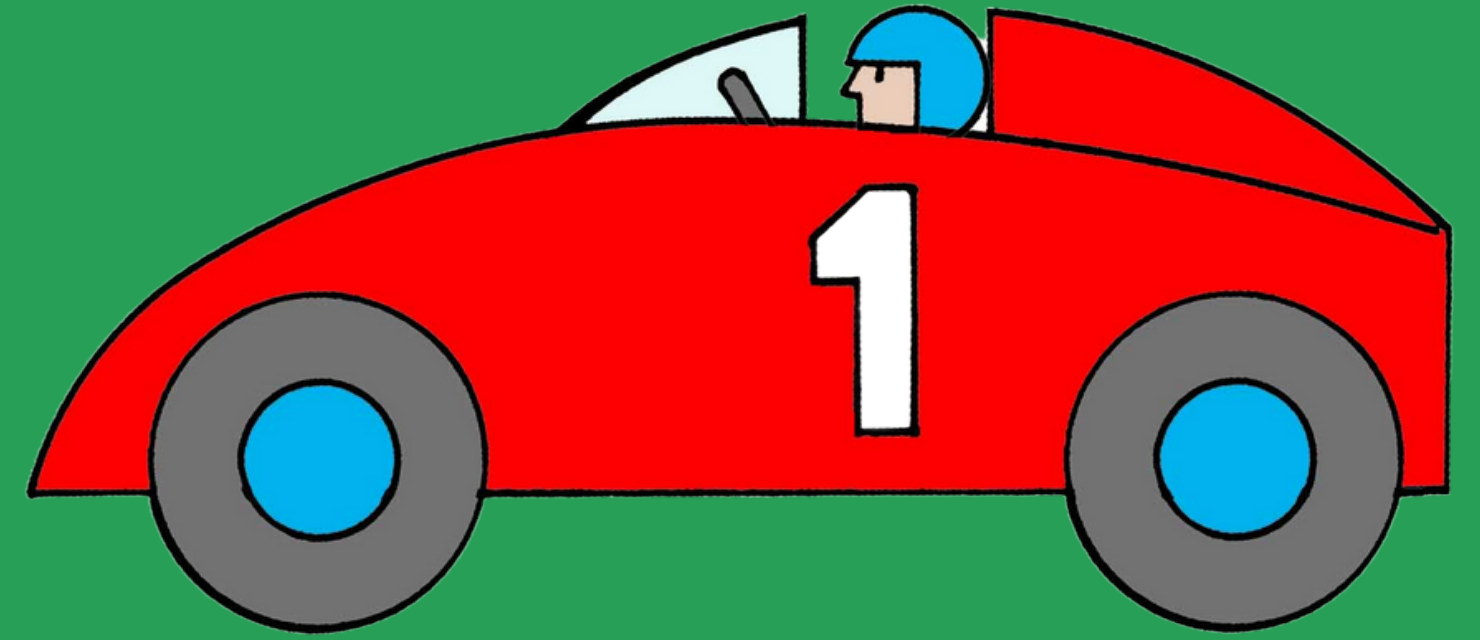
TENOR



**FIRST PART OF THE METAPHOR.
THE PART YOU ARE LITERALLY
TRYING TO DESCRIBE.**

2

VEHICLE



THE SECOND PART OF THE METAPHOR. IT IS HOW YOU ARE DESCRIBING THE TENOR.

EXAMPLE

Life for me ain't been no crystal stair.

"Life" is the tenor. Life is the first part of the metaphor and the subject you are actually describing. "Crystal stair" works as your vehicle. It is the second part of the metaphor. You are not really trying to describe the crystal stair, instead, you are describing "life" using "crystal stair" as the vehicle.



LET'S ASSESS

Create 3 metaphors using the words below. Identify the **tenor** and **vehicle**.

MONEY

AIR

RAIN

JUNGLE

LOVE

LION

HOW TO WRITE EXTENDED METAPHORS

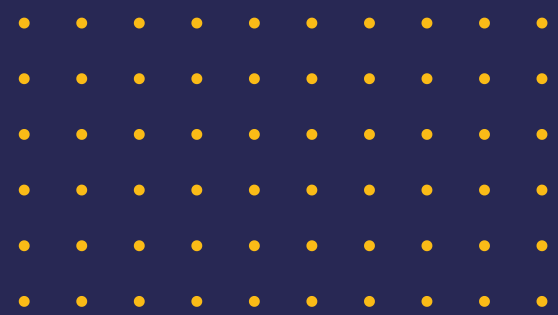


Tip #1: Consider the main themes you're delving into.

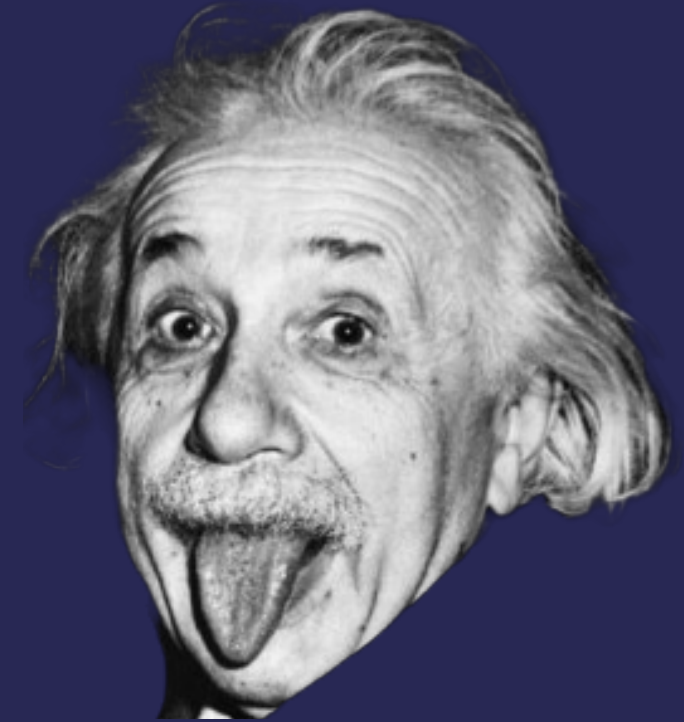


Think about the main themes of your work and those you believe would be best served through extended metaphor, whether you are creating poetry, novel, play, or essay.

In Langston's
"Mother to
Son," what do
you think is the
theme?



Tip #2: Brainstorm compelling images.



After choosing the starting tenor for your metaphor, think of some vehicle that the tenor brings to mind. Make a list of all the potential vehicles you've come up with after some time.

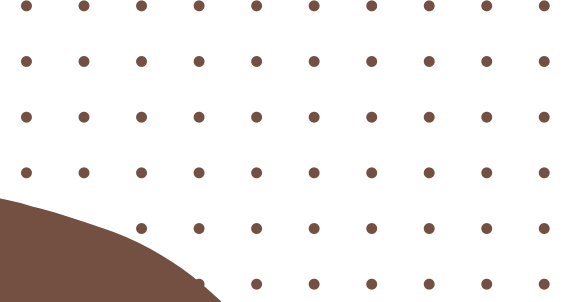


LET'S ASSESS

Brainstorm your own list of metaphors for a mother's love below.

A
MOTHER'S is...
LOVE

- _____
- _____
- _____
- _____
- _____



Tip #3: Find a clear comparison.




Pick an analogy that is both striking and understandable. While creating a natural comparison, a good metaphor avoids being too literal or obvious.



LET'S ASSESS

Read the poet's metaphor again. "Life ain't been no crystal stair." Ask yourself: what is the opposite of "crystal stair" as it is used in the poem?

- tacks
 - splinters
 - boards torn up
 - no carpet on the floor
 - bare
 - no light
- 



LET'S ASSESS

Choose your favorite metaphor for life in the last activity.

OPPOSITE of... _____ .
(your chosen metaphor)

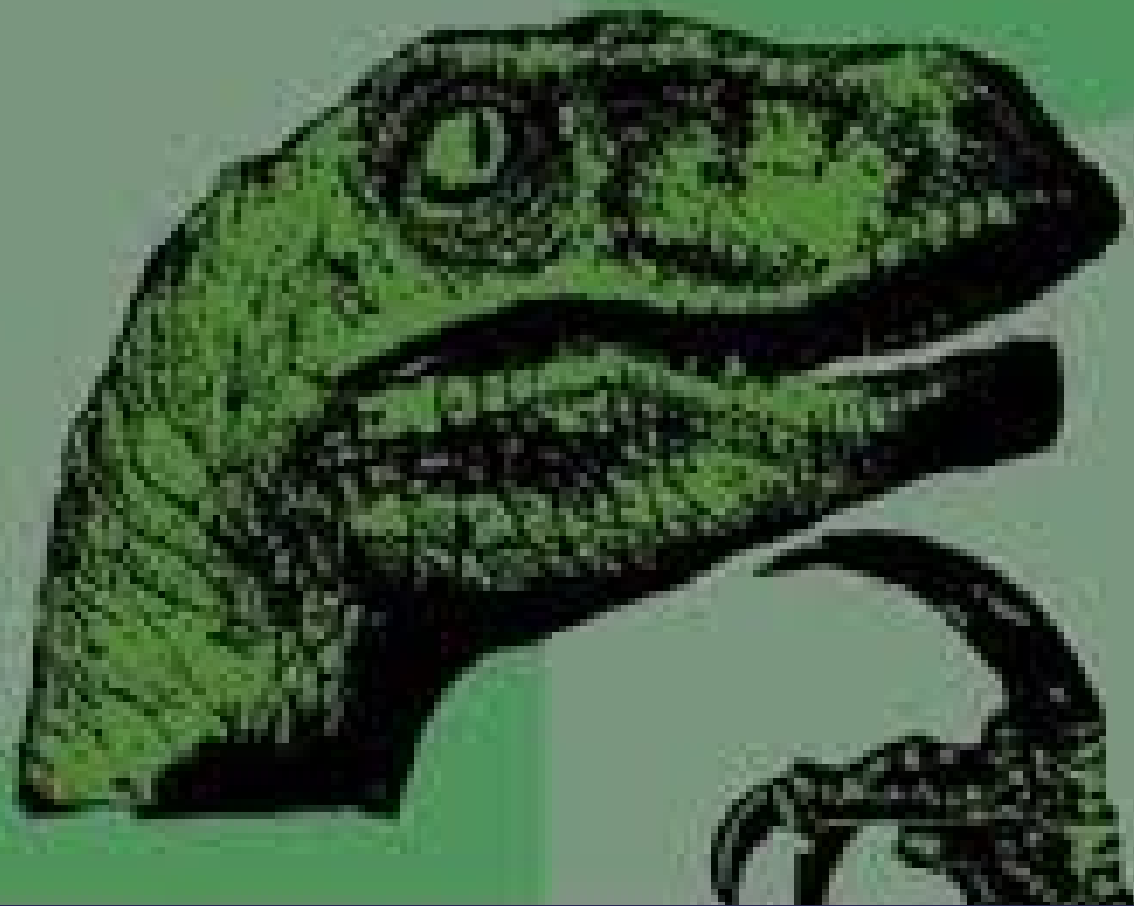
List below...

- _____
- _____
- _____
- _____
- _____



Tip #4: Overwrite

THE OVERWRITE BUTTON...

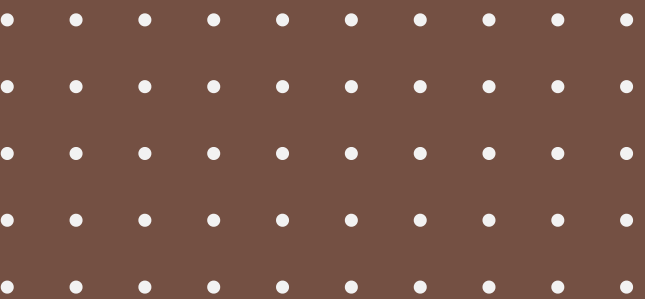


Once you've decided on the tone and vehicle of your metaphor, begin to extend it out over a few lines or paragraphs. Explore the various ways you might demonstrate the comparison and reveal different aspects of your metaphor.



LET'S ASSESS

Write your own version of "Mother to Son." You will create your own "extended metaphor". You can follow the format of the poem.



Tip #5: Edit

Edit your extended metaphor down to its most dramatic and moving bits. Extended metaphors are longer than simple metaphors, yet you still want to write in a clear and direct manner.

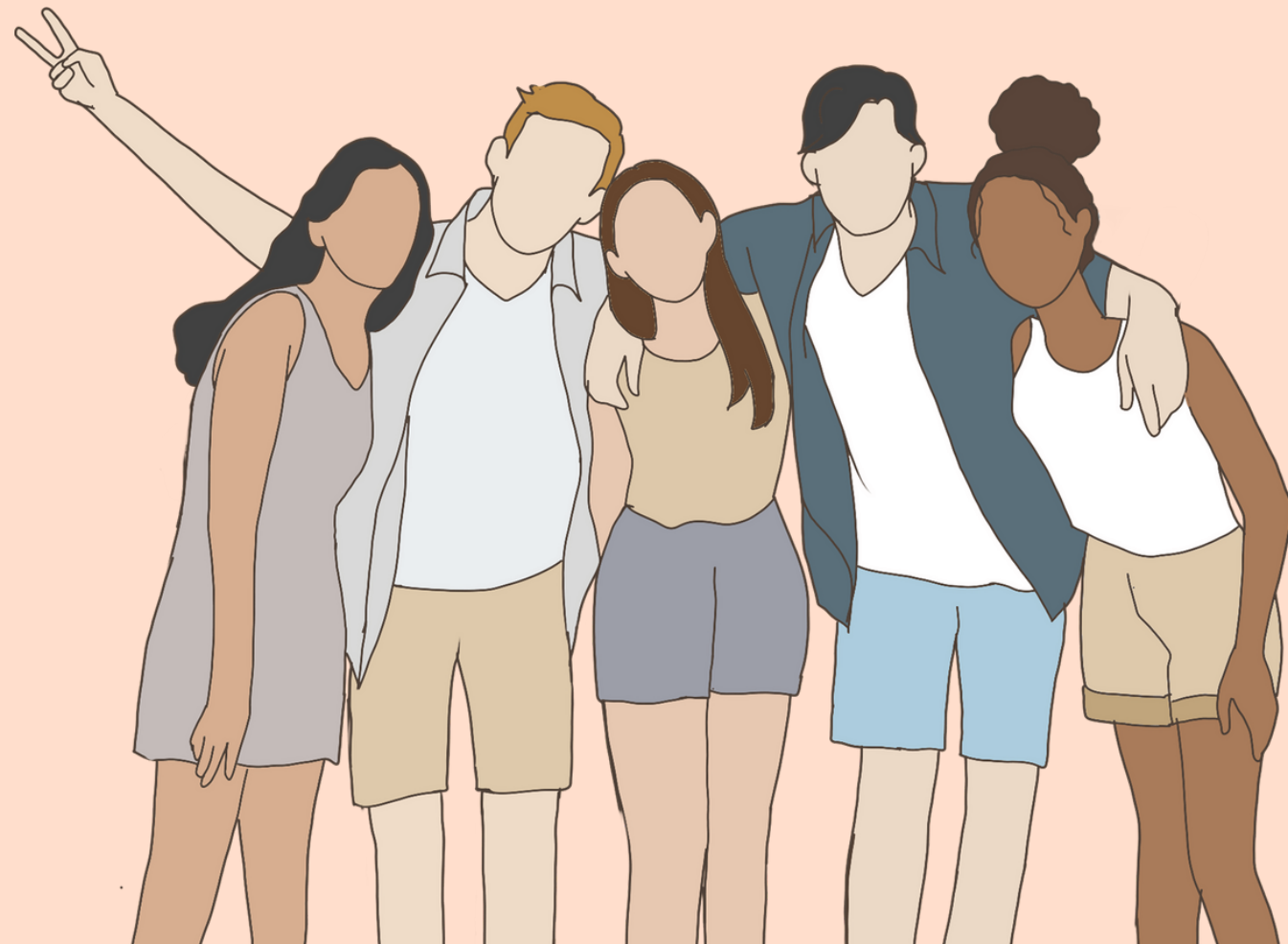


FINAL ACTIVITY

Choose one of the two dissimilar things on the next slides. In 500 words, create your own poem or narrative essay using extended metaphors. Don't forget the tips from today's discussion!

1

OPTION 1



Friendship

&



a Home

2

OPTION 2



The road

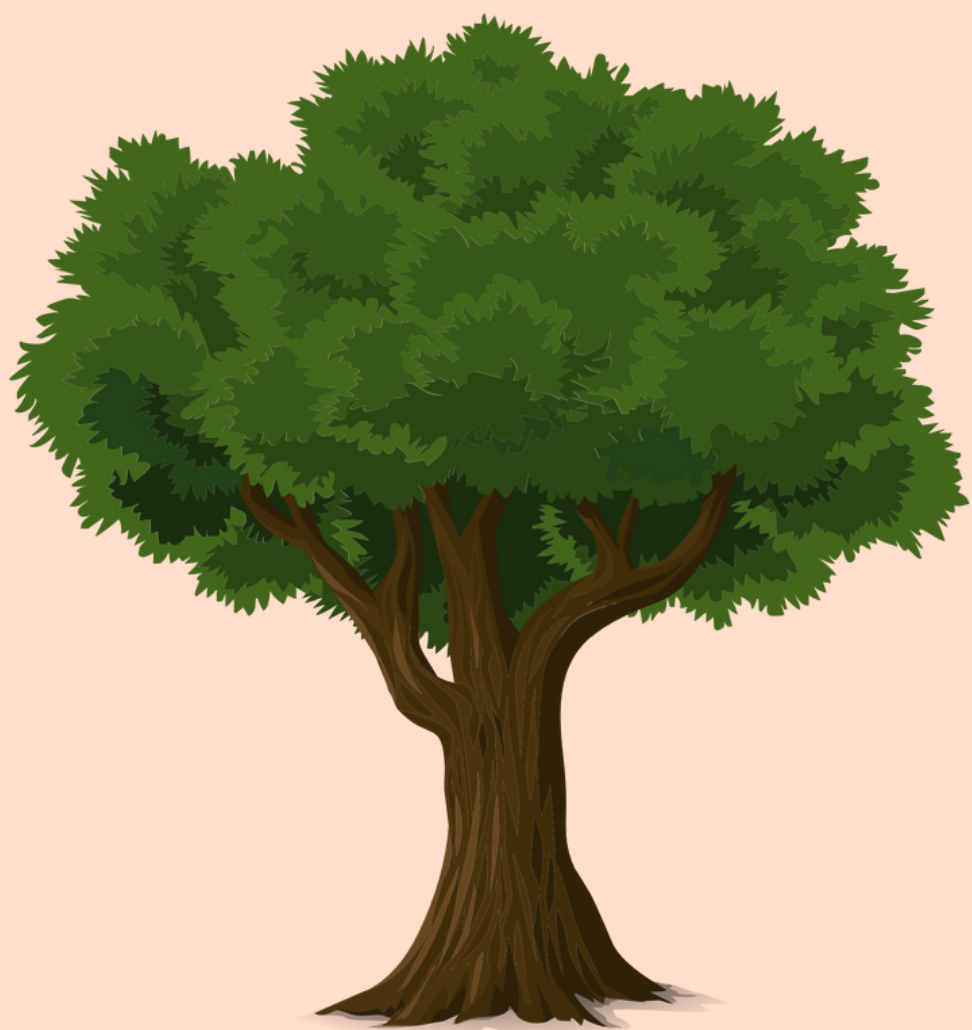
&



Your Dream



OPTION 3



Tree

&



Money

THANK YOU!

Any questions?

