

Day 1: Introduction to Persuasive Letter Writing

NSW Selective Test Preparation
10-Day In-Depth Intensive Writing Program

Learning Objectives

By the end of today's session, students will be able to:

- Distinguish between formal and informal letter formats
- Identify and implement the key components of a persuasive letter
- Effectively use rhetorical questions, emotive language, and painful imagery
- Develop and maintain an appropriate formal tone in writing
- Select powerful vocabulary to enhance persuasive impact

Letter Formats: Formal vs. Informal

Formal Letters

- Professional context and tone
- Structured format with addresses and dates
- Appropriate salutation (Dear Sir/Madam)
- No contractions or colloquialisms
- Formal closing (Yours faithfully/sincerely)
- Examples: Business correspondence, complaints, job applications, letters to officials

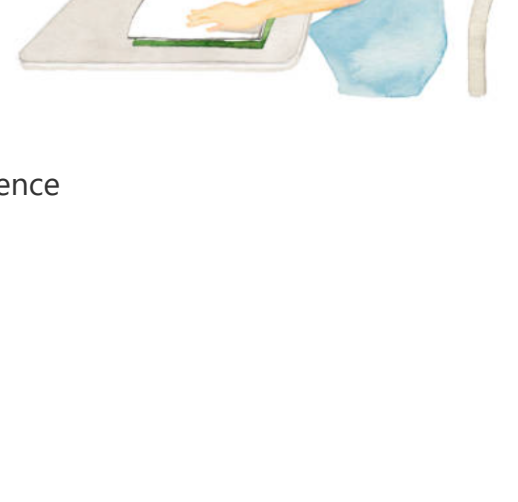
Informal Letters

- Personal, conversational tone
- Relaxed structure (may omit addresses)
- Casual greeting (Dear John, Hi Sarah)
- Contractions and colloquialisms acceptable
- Casual closing (Best wishes, Love, Cheers)
- Examples: Letters to friends, family members, thank-you notes

Note: For the NSW Selective Test, you will typically be asked to write a **formal persuasive letter** addressed to someone in a position of authority.

Components of a Formal Persuasive Letter

- Sender's Address** - Your address at the top right corner (no name)
- Date** - Written below the address
- Recipient's Address** - Written on the left side
- Greeting/Salutation** - Formal opening (Dear Sir/Madam, Dear Councillor)
- Subject Line** (optional) - Brief description of letter's purpose
- Introduction** - State purpose clearly, establish tone, present main position
- Body Paragraphs** - Each paragraph focuses on one main argument with supporting evidence
- Conclusion** - Summarize position, restate main points, call to action
- Formal Sign-off** - "Yours faithfully" (if name unknown), "Yours sincerely" (if name known)
- Name and Signature** - Your name and signature



The Writing Prompt

Your local council has announced plans to demolish the historic community library to build a commercial shopping complex. As a concerned student who frequently uses the library for study and research, write a persuasive letter to the council expressing your opposition to this decision.

This scenario requires you to:

- Take a clear position (opposing the library demolition)
- Understand your audience (council members who have decision-making power)
- Consider your persona (a student who values the library)
- Use persuasive techniques effectively to influence the decision
- Structure arguments logically and convince with emotional appeal

Key Persuasive Techniques

Rhetorical Questions

Questions designed to make the reader think, not to be answered directly.

Examples:

- How can we justify extinguishing this beacon of knowledge that has illuminated countless minds across generations?
- Is this the legacy of cultural desecration you wish to bear responsibility for?
- Have we truly become so morally bankrupt that we would trade our intellectual heritage for the hollow promise of retail prosperity?
- Will you be remembered as the guardian who protected our intellectual sanctuary, or as the executor who signed its death warrant?

Emotive Language

Words and phrases that evoke strong emotional responses in the reader.

Examples:

- Positive emotions:** sanctuary, nurturing embrace, beacon of knowledge, intellectual heritage
- Negative emotions:** unconscionable, catastrophic, devastating, profound anguish, cultural atrocity
- Moral appeal:** cultural desecration, morally bankrupt, intellectual vandalism

Painful Imagery

Vivid descriptions that create emotional impact through painful associations.

Examples:

- A gaping, festering laceration in our community's soul
- Severing an artery in our collective body of knowledge, leaving us hemorrhaging cultural memory
- Sacrificing our community's cultural cornerstone upon the blood-stained altar of commercial expediency
- Bulldozers, like ravenous metal beasts, tearing into the library's dignified façade

Enhanced Exemplar: Introduction

Dear Councillor Thompson,

I write to you with a heart weighted by profound anguish regarding the council's unconscionable proposal to demolish our venerable community library in favor of yet another sterile, soulless commercial monstrosity. As a student whose intellectual growth has been nurtured within those hallowed walls, I find myself compelled to voice my vehement opposition. How can we justify extinguishing this beacon of knowledge that has illuminated countless minds across generations? The mere thought of those sacred shelves—laden with humanity's greatest thoughts—being reduced to splintered debris sends visceral tremors of revulsion through our community's collective consciousness. I implore you, with every fiber of my academic being, to reconsider this catastrophic decision before an irreversible cultural atrocity is committed against our community's intellectual heritage.

Analysis of Techniques:

- Emotive language:** "profound anguish," "unconscionable proposal," "visceral tremors of revulsion"
- Rhetorical question:** "How can we justify extinguishing this beacon of knowledge...?"
- Physical imagery:** "sacred shelves...reduced to splintered debris"
- Clear position statement:** "I find myself compelled to voice my vehement opposition"
- Appeal to emotion:** "irreversible cultural atrocity committed against our community's intellectual heritage"

Enhanced Exemplar: Body Paragraph (Painful Imagery)

The destruction of our library would inflict not merely a wound, but a gaping, festering laceration in our community's soul—one that would suppurate with regret for generations to come. Each beloved tome wrenched from its rightful place would be akin to severing an artery in our collective body of knowledge, leaving us hemorrhaging cultural memory and intellectual potential. Can you not visualize the agonizing spectacle of bulldozers, like ravenous metal beasts, tearing into the library's dignified façade, their merciless jaws ripping apart the sanctuary that has cradled our community's dreams? The cacophonous symphony of destruction—concrete cracking like bones, glass shattering like hopes, wood splintering like promises—would reverberate through our neighborhoods, drowning out the whispered wisdom of authors who have guided us through centuries. Is this the legacy of cultural desecration you wish to bear responsibility for? The barren cavity left behind will forever echo with the phantom cries of stories never read, discoveries never made, and minds never awakened to their full potential.

Analysis of Techniques:

- Extended metaphor:** Library as a living entity that can be wounded, with books as vital organs
- Painful imagery:** "gaping, festering laceration," "suppurate with regret," "severing an artery"
- Personification:** Bulldozers as "ravenous metal beasts," with "merciless jaws"
- Sensory details:** "cacophonous symphony of destruction"
- Parallel structure:** "concrete cracking like bones, glass shattering like hopes, wood splintering like promises"
- Direct appeal to conscience:** "Is this the legacy of cultural desecration you wish to bear responsibility for?"

Enhanced Exemplar: Body Paragraph (Physical Description)

Our library stands as an almost sentient guardian of knowledge—its very physical presence a testament to our community's intellectual aspirations. The weathered stone exterior, bearing the gentle patina of decades of seasonal transformations, cradles within it an ecosystem of learning that no digital surrogate could ever replicate. Inside, sunlight filters through dust-moted air, casting honeyed warmth across the burnished oak shelves that stand like sentinels, their wood grain telling stories of the forests from which they came. The familiar, intoxicating aroma—a complex perfume of vanilla-tinged aged paper, lemon-oil polished wood, and the subtle metallic scent of well-worn book bindings—triggers an almost Pavlovian response of intellectual excitement in all who cross the threshold. The reading tables, smoothed to a lustrous finish by thousands of eager palms and forearms, bear the nearly imperceptible impressions of pencil-pressed research notes—physical echoes of academic discoveries. The building's magnificent vaulted ceilings, with their intricate combs catching whispers and transforming them into the gentle ambient surruration that forms the library's distinctive voice, create an acoustic embrace that enfolds visitors in an almost womb-like sanctuary of contemplation. What commercial structure, however luxurious, could possibly embody such multisensory perfection?

Analysis of Techniques:

- Personification:** Library as a "sentient guardian of knowledge"
- Visual imagery:** "weathered stone exterior," "sunlight filters through dust-moted air"
- Tactile imagery:** "tables, smoothed to a lustrous finish"
- Olfactory imagery:** "complex perfume of vanilla-tinged aged paper, lemon-oil polished wood"
- Auditory imagery:** "gentle ambient surruration"
- Auditory immersion:** Appeals to all five senses to create a complete physical experience
- Rhetorical question:** "What commercial structure, however luxurious, could possibly embody such multisensory perfection?"

Enhanced Exemplar: Conclusion

I beseech you, with a fervor born of deep conviction and intellectual passion, to reject this proposal that would sacrifice our community's cultural cornerstone upon the blood-stained altar of commercial expediency. Have we truly become so morally bankrupt that we would trade our intellectual heritage for the hollow promise of retail prosperity? The meager financial gains—transient and ultimately inconsequential—pale into utter insignificance when measured against the incalculable cultural devastation this act of architectural and intellectual vandalism would inflict. Future generations will look back upon this moment with either gratitude for your wisdom or bitter condemnation for your complicity in cultural obliteration. The choice that stands before you transcends mere politics or economics—it is a referendum on our community's very soul. Will you be remembered as the guardian who protected our intellectual sanctuary, or as the executor who signed its death warrant? I implore you to stand resolutely with students, families, and all who hunger for knowledge by not merely rejecting this proposal, but by championing the expansion and celebration of our irreplaceable library. Our community deserves nothing less than the preservation and exaltation of its beating intellectual heart.

Yours in profound concern,
[Student's Name]

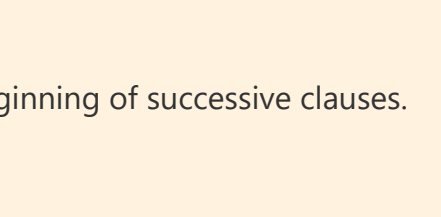
Analysis of Techniques:

- Elevated diction:** "beseech," "fervor," "conviction," "intellectual passion"
- Metaphor:** "blood-stained altar of commercial expediency"
- Rhetorical questions:** Multiple questions challenging the reader's moral position
- Appeal to legacy:** "Future generations will look back upon this moment..."
- Binary choice:** "guardian" or "executor" - forcing moral reflection
- Call to action:** Clear directive to not only reject the proposal but champion expansion
- Metaphor:** Library as the community's "beating intellectual heart"

Formal Tone and Vocabulary Selection

Characteristics of Formal Tone

- No contractions (use "cannot" not "can't")
- No slang or colloquialisms
- Complete sentences (no fragments)
- Complex sentence structures
- Third-person perspective (limited use of "I")
- Respectful language even when expressing opposition
- Precise and specific terminology



Vocabulary Elevation Examples

Basic Word	Elevated Alternative
Bad	Detrimental, deleterious, pernicious
Good	Beneficial, advantageous, propitious
Important	Crucial, imperative, paramount
Sad	Despondent, melancholic, crestfallen
Angry	Indignant, incensed, vehement
Big	Substantial, monumental, colossal
Think	Consider, contemplate, ruminate

Advanced Rhetorical Techniques

Anaphora

Repetition of words at the beginning of successive clauses.

Example:

It is our library that nurtured our minds. It is our library that preserved our history. It is our library that deserves our protection.

Epistrophe

Repetition of words at the end of successive clauses.

Example:

Knowledge must be protected. Learning must be protected. Our library must be protected.

Hypophora

Raising a question and immediately answering it.

Example:

What will replace our historic library? A soulless shopping complex devoid of intellectual nourishment.

Antithesis

Juxtaposition of contrasting ideas in balanced phrases.

Example:

A library creates cultural wealth; a shopping complex merely circulates money.

Tricolon

Series of three parallel elements of the same length.

Example:

Our library informs our minds, enriches our souls, and connects our community.

Chiasmus

Reversal of grammatical structures in successive phrases.

Example:

Ask not what your library has given you, but what you can give to your library.

Practice Activities

Activity 1: Rhetorical Question Development

Create three powerful rhetorical questions that address different aspects of the library demolition scenario:

- A question appealing to the council's sense of historical responsibility
- A question highlighting the educational impact on students
- A question addressing the community's cultural identity

Activity 2: Emotive Language Bank

Create a collection of emotive terms relevant to the library scenario:

- 10 positive terms describing the library and its benefits
- 5 negative terms describing the potential demolition and its impact
- 5 terms evoking moral responsibility or ethical considerations

Activity 3: Painful Imagery Exercise

Write a paragraph using painful imagery to describe the library's demolition. Incorporate at least one metaphor, one simile, and one personification.

Activity 4: Letter Planning

Create an outline for your persuasive letter with the following:

- Main argument for each paragraph (introduction, 3 body paragraphs, conclusion)
- Key persuasive techniques you'll use in each section
- Specific vocabulary that will elevate your writing

Assessment Criteria

Your persuasive letter will be assessed on the following criteria:

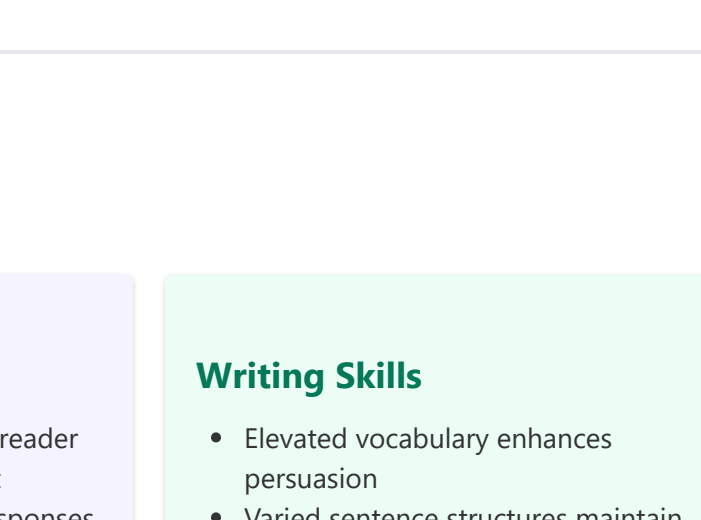
Criteria	Description
Structure and Format	Correct letter format with all components properly placed
Persuasive Techniques	Effective use of rhetorical questions, emotive language, and painful imagery
Language and Tone	Appropriate formal tone with elevated vocabulary
Argument Quality	Logical, compelling arguments with supporting details
Emotional Impact	Ability to evoke emotional response through descriptive language
Grammar and Mechanics	Correct spelling, punctuation, and grammar
Originality	Creative approach and unique perspectives

Homework Assignment

Instructions:

Write a complete persuasive letter based on the library demolition scenario. Your letter must include:

- Correct formal letter format with all components
- At least three effective rhetorical questions
- Extensive use of emotive language throughout
- At least one paragraph featuring painful imagery
- At least one paragraph with detailed physical descriptions
- A minimum of three advanced rhetorical techniques
- Appropriate formal tone throughout
- Length: 500-600 words



Summary of Key Points

Letter Format

- Follow correct formal structure
- Include all essential components
- Maintain appropriate tone throughout

Persuasive Techniques

- Rhetorical questions engage the reader
- Emotive language creates impact
- Painful imagery evokes strong responses

Writing Skills

- Elevated vocabulary enhances persuasion
- Varied sentence structures maintain interest
- Physical descriptions create vivid mental images

Remember: The NSW Selective Test values not just your ability to write, but your mastery of language techniques and your capacity to evoke emotional responses through carefully crafted persuasion.